

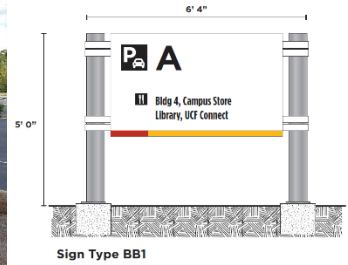


# CONSTRUCTION REPORT May 2022

## PROJECTS IN CONSTRUCTION

### Vehicular Wayfinding Signage

- Signs are in fabrication and installation started.
- Plan to have all new signs installed for Fall Term.



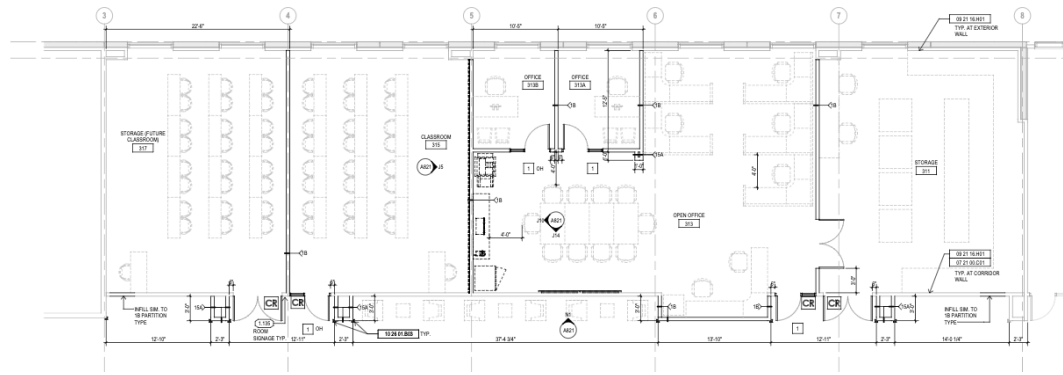
### East Campus Buildings 1 & 2 Roof Replacements

- Material delays due to supply chain issues have delayed the start of the project to June.
- Current project timeline projects substantial completion in November.



### Osceola CIT Building 3<sup>rd</sup> Floor Buildout

- Material delays due to supply chain issues have delayed the start of the project to June.
- Current project timeline projects substantial completion in August.





**CONSTRUCTION REPORT**  
**May 2022**