



June 28, 2017

**TO:** THE DISTRICT BOARD OF TRUSTEES  
OF VALENCIA COLLEGE

**FROM:** SANFORD C. SHUGART  
President

**RE:** APPROVAL OF THE MASTER PLAN FOR THE CENTRAL FLORIDA REGIONAL  
EDUCATION AND TRAINING CENTER AT VALENCIA COLLEGE'S SCHOOL OF  
PUBLIC SAFETY

**On December 17, 2014,** The District Board of Trustees approved the resolution to commission the School of Public Safety. As part of the School of Public Safety approved visioning plan, identifying programming needs and associated facilities were required to commence a Master Plan design.

**On April 27, 2016,** The District Board of Trustees approved the selection of C.T. HSU & Associates/Dewberry for Master Plan Design Services.

The Master Plan design was completed by the end of December 2016. The Master Plan design process included the participation of 47 Public Safety individuals representing 31 organizations.

**RECOMMENDED ACTION:**

The President recommends that the District Board of Trustees of Valencia College approve the Master Plan as presented.

\_\_\_\_\_  
President 

VALENCIA COLLEGE

School of Public Safety

Master Plan for the *Central Florida Regional  
Education and Training Center* at Valencia  
College's School of Public Safety

District Board of Trustees Meeting: June 28, 2017

# History

- **September 24, 2014** – The District Board of Trustees approved a resolution to designate the Criminal Justice Institute location as a Special Purpose Center
- **December 17, 2014** – The District Board of Trustees approved the resolution to commission the School of Public Safety
- **April 2, 2015** – The School of Public Safety has its unveiling ceremony
- **April 27, 2016** – The District Board of Trustees approved the selection of C.T. HSU & Associates/Dewberry for Master Plan Design Services

# Master Plan Development and Collaboration

- **July 21, 2016 - Master Plan Workshop I:** Programming and Vision included C.T. Hsu & Associates/Dewberry, Valencia and forty-seven (47) public safety individuals representing 31 organizations
- **July 28 & August 4, 2016 - Master Plan Group Discussions:** Confirmation of programming with Fire Rescue, Law Enforcement, Corrections and Private and Hospitality Security
- **September 29, 2016 - Master Plan Workshop II:** Presentation of three master plan concepts and discussion of each with voting on which concept to move forward

# Master Plan Development and Collaboration

- **December 31, 2016 - Master Plan completed**
- **February 2017 – Master Plan individual meetings** with Public Safety leaders to review the master plan and discuss priorities
- **March 31, 2017 - Master Plan group meeting** with Public Safety Leaders and Dr. Shugart to discuss support and priorities (Twenty eight (28) letters of support to date)

# Current Site





- |                                     |                   |                        |                        |                     |
|-------------------------------------|-------------------|------------------------|------------------------|---------------------|
| 1 LOBBY                             | 6 EXISTING CA     | 11 DART COURSE         | 16 FIRING RANGE        | 21 WORKSHOP         |
| 2 STUDENT SERVICES                  | 7 PARKING GARAGE  | 12 DRILL FIELD         | 17 FIT PIT             | 22 COVERED TRAINING |
| 3 OCFR ADMIN.                       | 8 VISITOR PARKING | 13 DRAFT POND          | 18 EXTERIOR FITNESS    |                     |
| 4 INSTRUCTIONAL SPACES / CLASSROOMS | 9 R/O             | 14 HEAVY EQUIP / MAINT | 19 EQUIPMENT WARDHOUSE |                     |
| 5 CONFERENCE / AUDITORIUM           | 10 FIRE STATION   | 15 NEW DEP             | 20 TACTICAL BUILDING   |                     |

EXISTING BUILDING
NEW BUILDINGS
TRAINING STRUCTURES
COVERED OBSERV. & WALKWAY

# VALENCIA COLLEGE PUBLIC SAFETY CAMPUS

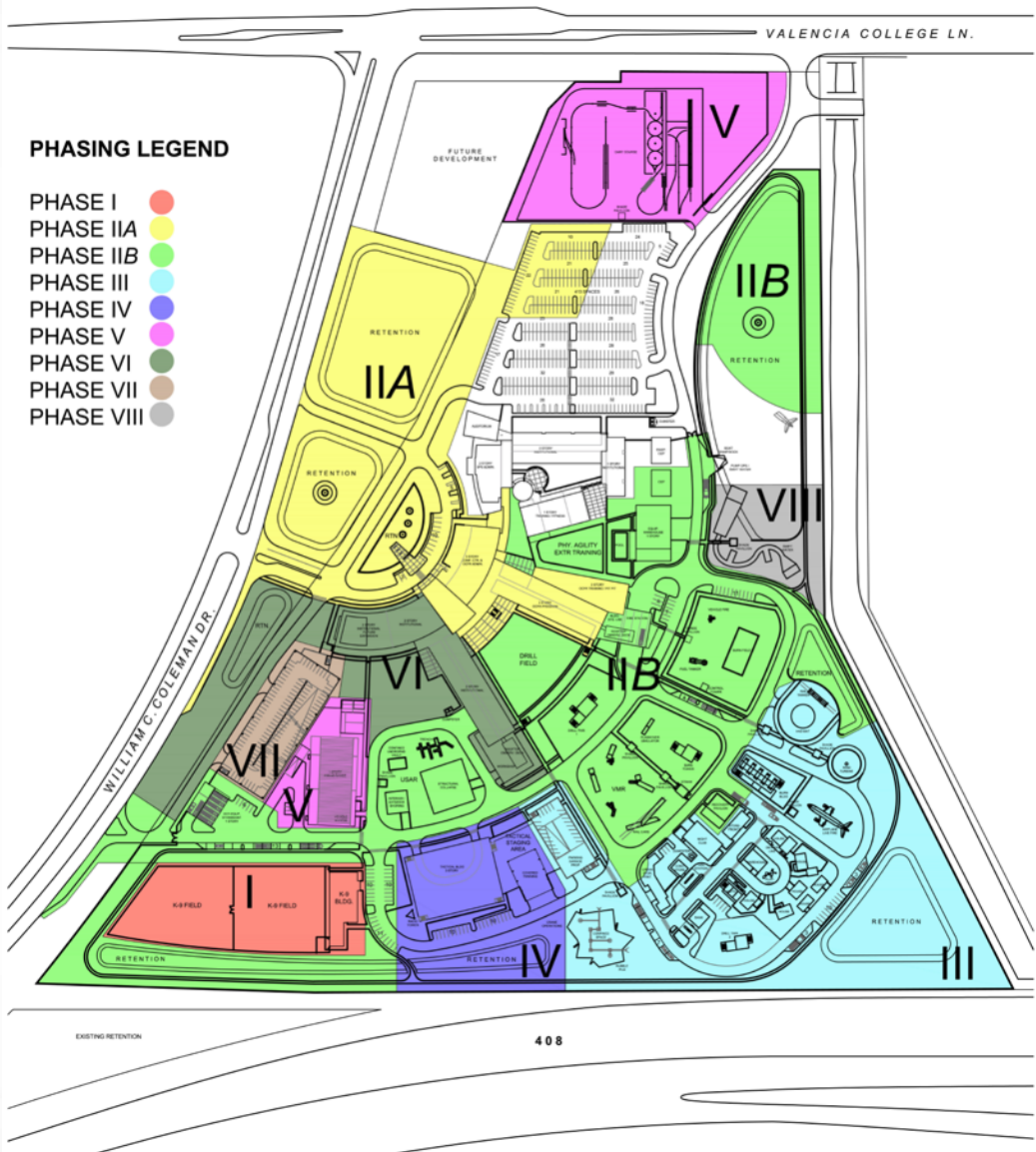
## ILLUSTRATIVE MASTER PLAN

12-13-2015  
VALENCIA COLLEGE

C.T. HSU + ASSOCIATES, P.A. Dewberry

**VALENCIA COLLEGE**

School of Public Safety



**PHASING LEGEND**

- PHASE I ●
- PHASE II A ●
- PHASE II B ●
- PHASE III ●
- PHASE IV ●
- PHASE V ●
- PHASE VI ●
- PHASE VII ●
- PHASE VIII ●



# Regional Priorities/Phasing

- I. OCSO K-9 facility and training grounds (\$3.7m) ●
  
- II. A) New campus entrance and building 2 to include entrance lobby, events center, classrooms, simulation labs, Fire Agencies training personnel such as OCFRD, fitness center, fire station and an Emergency Operations Center (\$35.2m) ●  
  
B) Tactical Area I/fire training structures (\$24.7m) ●
  
- III. Tactical Area II (\$9.2m) ●

# Regional Priorities/Phasing

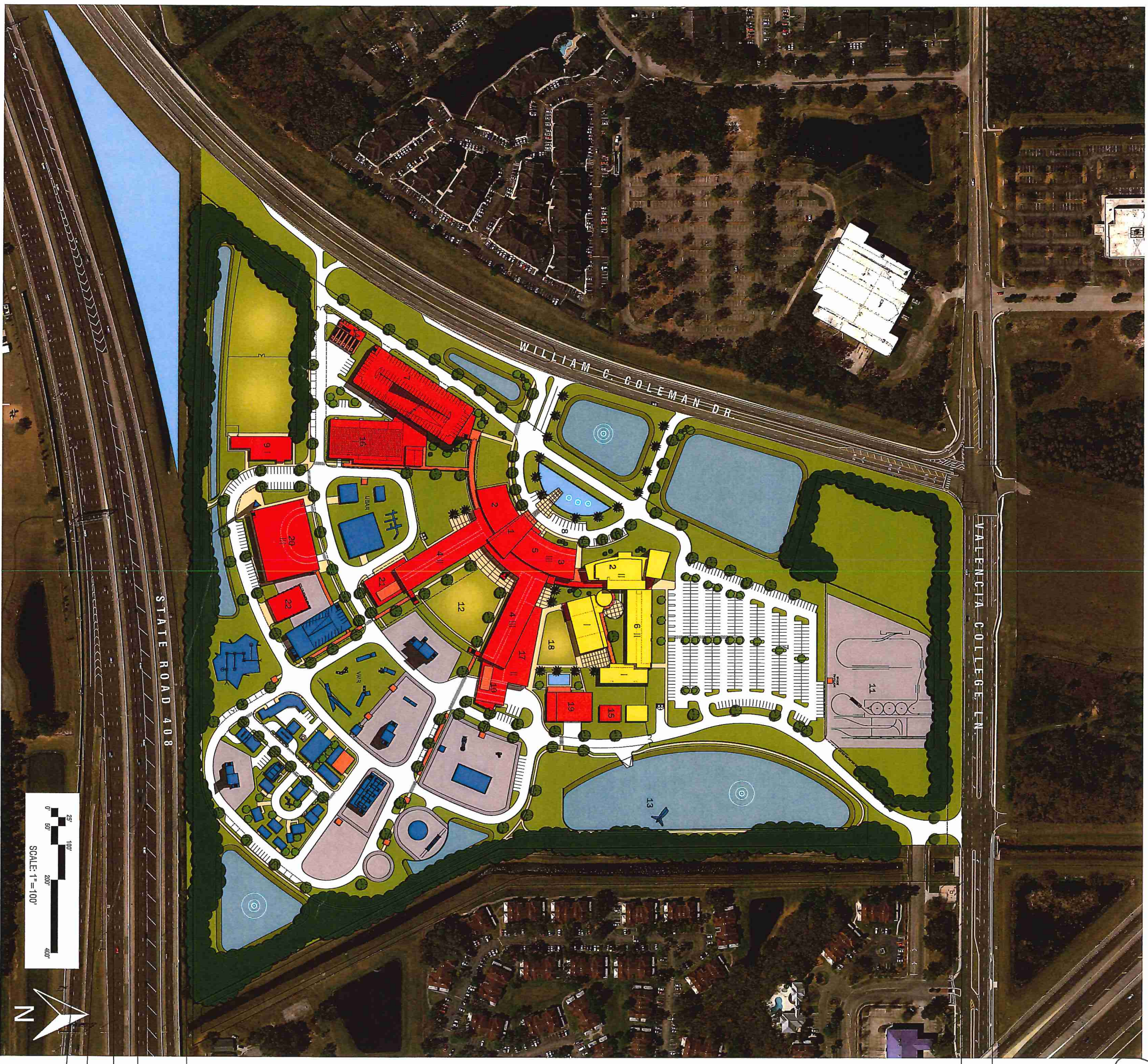
- IV. Tactical Building (\$38.3m) ●
- V. Firearms Range (\$19.6m) ●
- VI. Building 3 – Criminal Justice and Center for Accelerated Training (\$22.3m) ●
- VII. South Parking Garage (\$8.8m) ●
- VIII. Additional Tactical Props (\$2.8m) ●

# Funding Strategy

- May 8, 2017: Valencia team begins work on an outline and timeline of a funding strategy
- Sources of potential funding: local, state, and federal governments, private (P3)
- Create a taskforce of Valencia and external partners to identify and pursue funding
- Currently have strong public safety agency support, we are building community and political support



7



- 1 LOBBY
- 2 STUDENT SERVICES
- 3 OCFR ADMIN.
- 4 INSTRUCTIONAL SPACES / CLASSROOMS
- 5 CONFERENCE / AUDITORIUM

- 6 EXISTING C/I
- 7 PARKING GARAGE
- 8 VISITOR PARKING
- 9 K-9
- 10 FIRE STATION

- 11 DART COURSE
- 12 DRILL FIELD
- 13 DRAFT POND
- 14 HEAVY EQUIP. / MAINT.
- 15 NEW CEP

- 16 FIRING RANGE
- 17 FIT PIT
- 18 EXTERIOR FITNESS
- 19 EQUIPMENT WAREHOUSE
- 20 TACTICAL BUILDING

- 21 WORKSHOP
- 22 COVERED TRAINING

**EXISTING BUILDING**

**NEW BUILDINGS**

**TRAINING STRUCTURES**

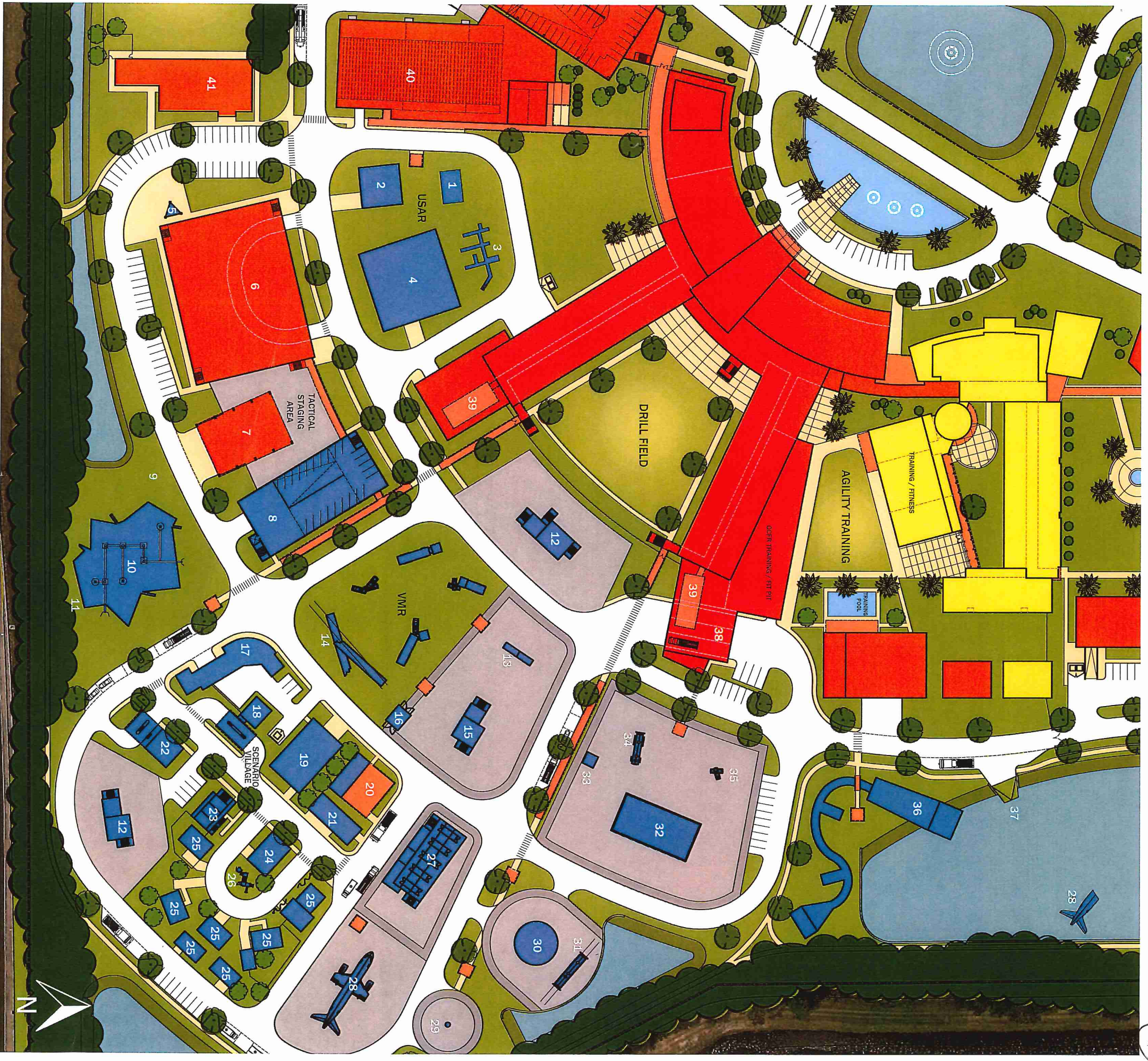
**COVERED OBSERV. & WALKWAY**

# VALENCIA COLLEGE PUBLIC SAFETY CAMPUS

## ILLUSTRATIVE MASTER PLAN

12-12-2016  
**VALENCIA COLLEGE**

C.T. HSU + ASSOCIATES, P.A. Dewberry®



- |                              |                       |                            |                                      |                  |                  |                           |
|------------------------------|-----------------------|----------------------------|--------------------------------------|------------------|------------------|---------------------------|
| 1 CONFINED UNDERGROUND VAULT | 6 TACTICAL BLDG       | 11 RUBBLE PILE             | 16 STRAW STORAGE                     | 21 STORE FRONT   | 28 AIRPLANE      | 35 VEHICLE FIRE           |
| 2 INTERIOR/EXTERIOR SHOPING  | 7 COVERED TRAINING    | 12 DRILL TOWER             | 17 URBAN STORE FRONT                 | 22 BANK          | 29 WIND TURBINE  | 36 PUMP OPS / SWIFT WATER |
| 3 TRENCH                     | 8 PARKING GARAGE PROP | 13 FLASHOVER SIMULATOR     | 18 CONV. STORE / GAS STATION         | 23 MOTEL         | 30 HAZ-MAT       | 37 BOAT RAMP / DOCK       |
| 4 STRUCTURAL COLLAPSE        | 9 CRANE OPERATIONS    | 14 RAIL CARS               | 19 NIGHT CLUB                        | 24 WAREHOUSE     | 31 RAIL TANKER   | 38 FIRE STATION           |
| 5 RADIO TOWER                | 10 CONFINED SPACE     | 15 BURN TOWER              | 20 RECOVERY PAVILION                 | 25 HOUSE         | 32 BURN FIELD    | 39 OBSERVATION DECKS      |
| <b>EXISTING BUILDING</b>     | <b>NEW BUILDINGS</b>  | <b>TRAINING STRUCTURES</b> | <b>COVERED OBSERV. &amp; WALKWAY</b> | 26 PLAYGROUND    | 33 CONTROL TOWER | 40 FIRING RANGE           |
|                              |                       |                            |                                      | 27 BURN BUILDING | 34 FUEL TANKER   | 41 K-9                    |

# VALENCIA COLLEGE PUBLIC SAFETY CAMPUS

## ENLARGED TRAINING PROP AREA

12-12-2016  
**VALENCIA COLLEGE**

C.T. HSU + ASSOCIATES, P.A. Dewberry®



## PHASING

In order to better align the master plan development with available funds and future funding, Valencia College and the planning team have reevaluated how the campus could grow in smaller increments. The result is an eight phase strategy that allows targeted infrastructure investments to be implemented along with the development needs instead of front loading these costs as previously proposed in a three phase scenario.

### PHASE I

In Phase I the K-9 training facility is established in the south west corner of the site replacing the existing temporary facilities. Utilities and a stabilized gravel roadway will be extended southwards to support operations.

### PHASE IIA

This phase creates the new front entrance to the campus along Coleman Drive and the construction of Building 2 just south of existing Building 1 (CJI). The new building contains administrative and instructional spaces for Fire Agencies such as OCFRD and also houses the new entrance lobby to the campus, a conferencing facility, and a multi-lab simulation suite. The existing parking lot is expanded and a new temporary lot is established to support the expanded facilities.

### PHASE IIB

Following soon after Phase IIA, this phase brings the construction / installation of the key training components / props needed for training certifications. Key infrastructure improvements like the expansion of the pond and the loop road connecting the north and south entrances are implemented.

### PHASE III

The scenario village and supporting infrastructure is installed in the south east corner of the site.

### PHASE IV

The tactical building and covered training area are added.

### PHASE V

The indoor gun range is built north of the K-9 area.

### PHASE VI

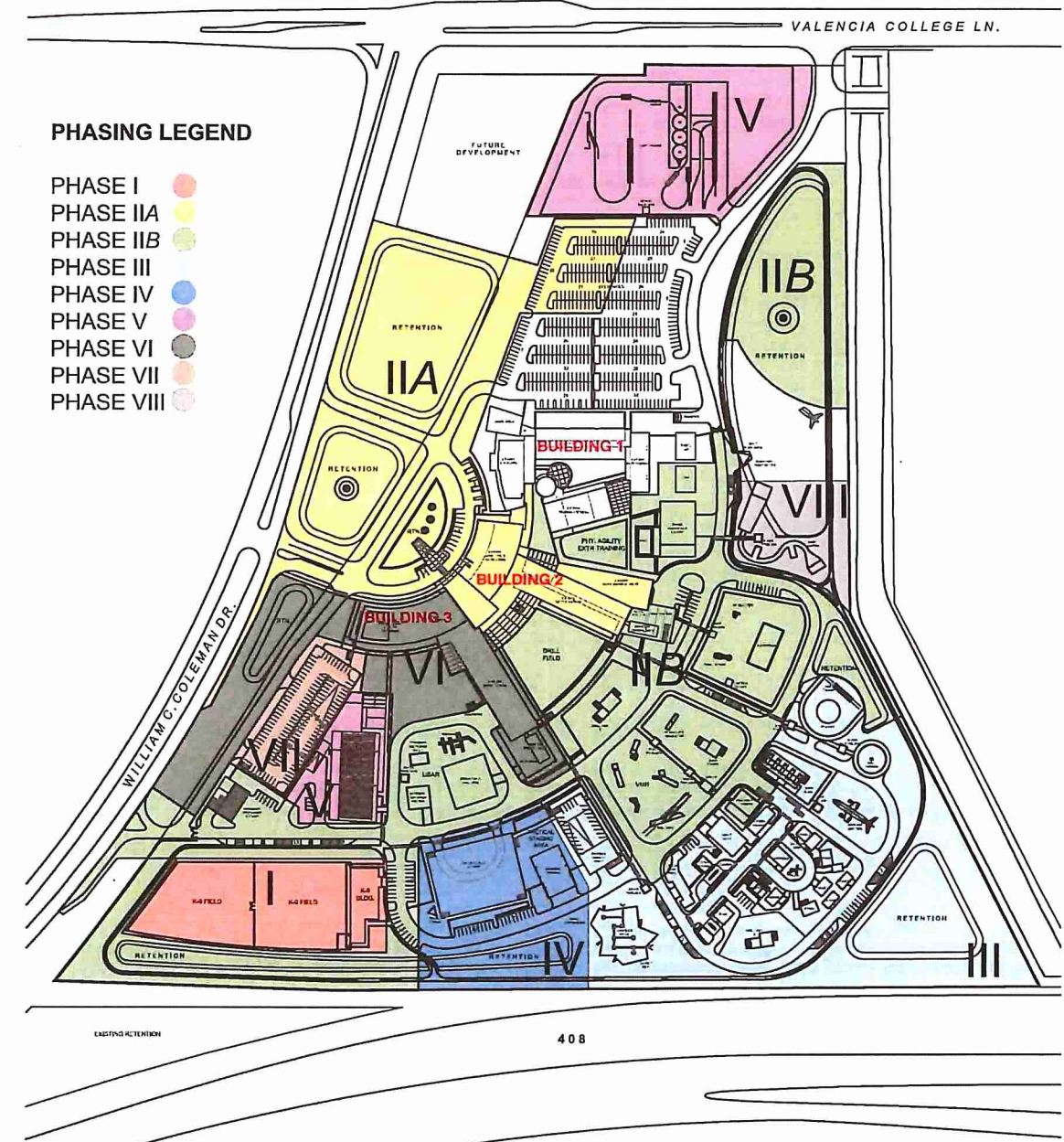
In Phase VI Building 3 is added to the campus to house additional administrative spaces, library, classrooms, labs and a food service facility.

### PHASE VII

Parking garage.

### PHASE VIII

The remaining training props and the swift water course are installed.



17