

Strategic Indicator Report

2013-2014 Student Demographics

March 2, 2015

Note: A version suitable for presentation is available upon request.

VALENCIA COLLEGE

Valencia College
Strategic Indicators Report
2013-2014 Student Demographics
March 2, 2015
Table of Contents

Unduplicated Headcounts, College-wide

By Reporting Year, Annual	4
Data Table	5
By Gender, Fall Term.....	6
Data Table-Gender	7
By Race / Ethnicity, Fall Term	8
Data Table-Race / Ethnicity.....	9
By Age Group, Fall Term	12
Data Table-Age Group.....	13
By Student Status, Fall Term	15
Data Table-Student Status	16
By Degree Intent, Full-Time / Part-Time, Fall Term.....	17
Data Table-Degree Intent	18
By Degree Intent, % Full-Time, Fall Term	19
Data Table-Degree Intent % Full Time	20
By Direct Connect to UCF, Fall Term.....	21
Data Table-Direct Connect.....	22

Credit FTE (Full Time Equivalent), College-wide

New Student Share of Total Credit FTE, Reporting Year, Annual	23
Data Table-Credit FTE	24

College Preparatory 3-Year Success Rate by Ethnicity

Mathematics (Valencia compared to Florida College System)..... 25
 Data Table 26
Writing (Valencia compared to Florida College System) 27
 Data Table 28
Reading (Valencia compared to Florida College System) 29
 Data Table 30

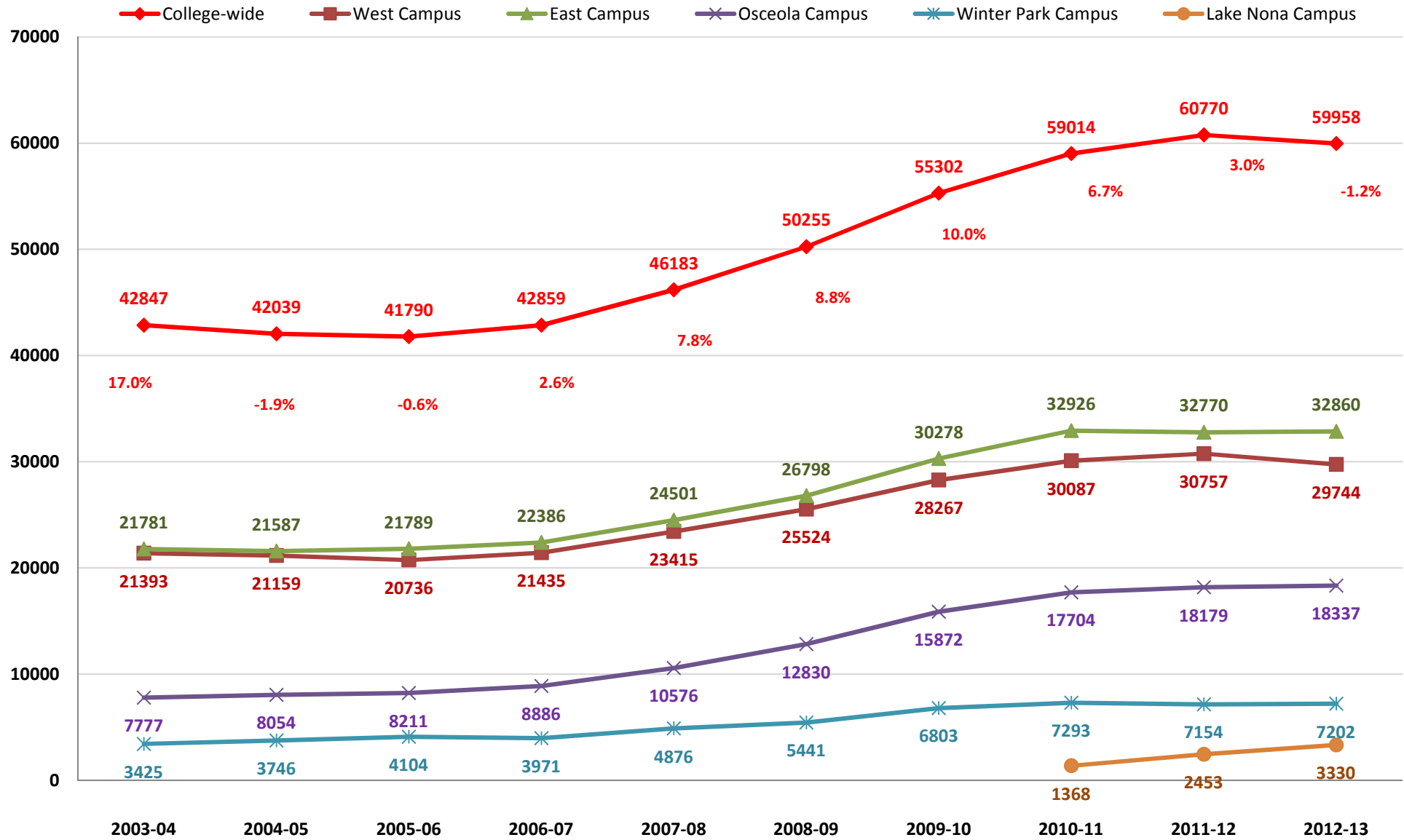
Annual Unduplicated Headcounts

Across Reporting Year, College-wide and Campus Attended

Unduplicated College-wide (counted once per year regardless of the number of courses taken or number of campuses attended)

Campus unduplicated headcounts (enrolled students counted once per course meeting location regardless of number of courses taken or number of campuses attended)

Headcounts are duplicated across campuses and unduplicated within campuses; therefore, the sum of the campus headcounts is greater than the college unduplicated headcount.



Annual Unduplicated Headcounts Across Reporting Year, College-wide and Campus Attended

Unduplicated College-wide (counted once per year regardless of the number of courses taken or number of campuses attended)

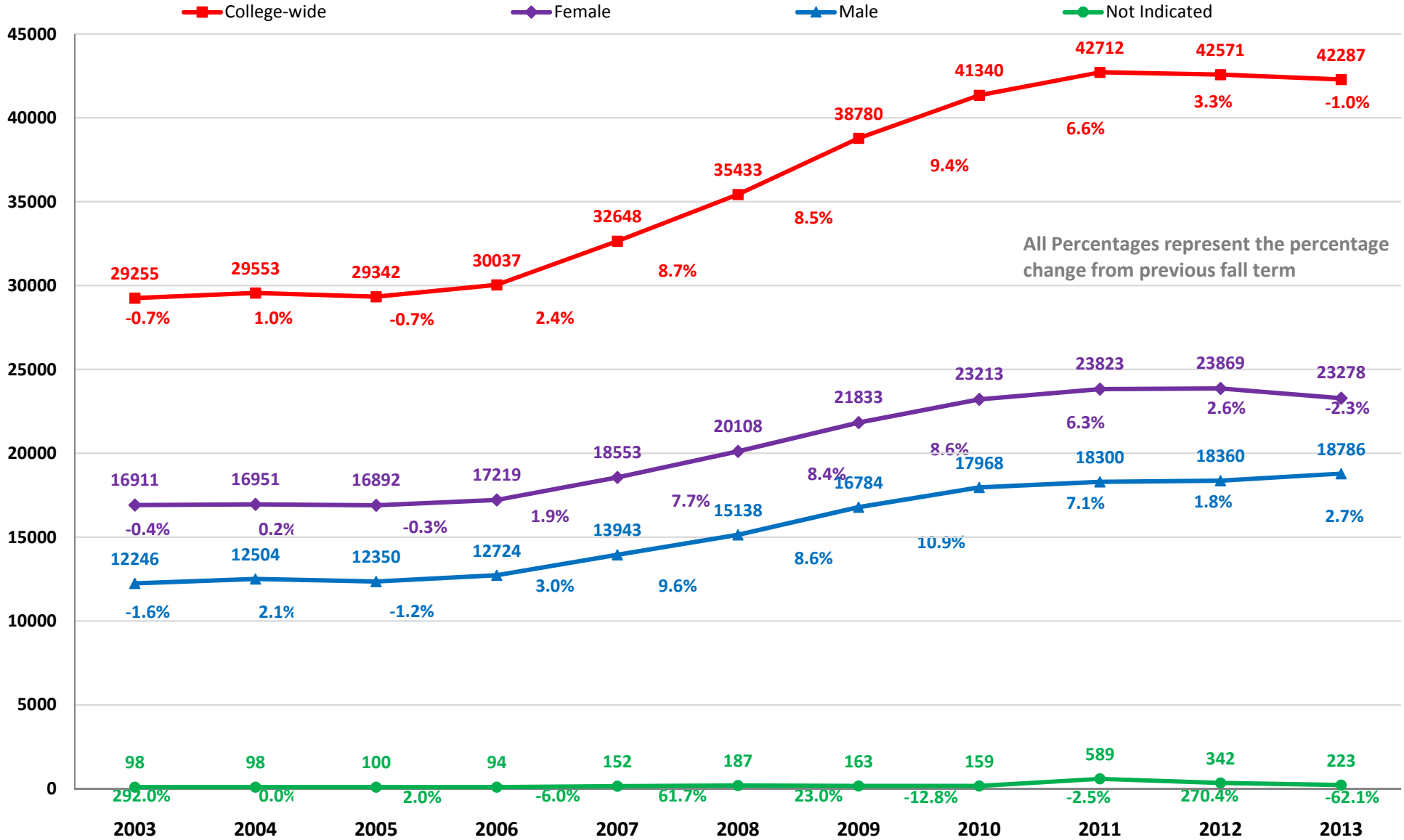
Campus unduplicated headcounts (enrolled students counted once per course meeting location regardless of number of courses taken or number of campuses attended)

Headcounts are duplicated across campuses and unduplicated within campuses; therefore, the sum of the campus headcounts is greater than the college unduplicated headcount.

	Report Year (starts in summer ends in spring)									
	2003-04	2004-05	2005-06	2006-07	2007-08	2008-09	2009-10	2010-11	2011-12	2012-13
College-wide	42847	42039	41790	42859	46183	50255	55302	59014	60770	59958
West Campus	21393	21159	20736	21435	23415	25524	28267	30087	30757	29744
East Campus	21781	21587	21789	22386	24501	26798	30278	32926	32770	32860
Osceola Campus	7777	8054	8211	8886	10576	12830	15872	17704	18179	18337
Winter Park Campus	3425	3746	4104	3971	4876	5441	6803	7293	7154	7202
Lake Nona Campus								1368	2453	3330
	Percentage Change From Previous Year									
College-wide	17.0%	-1.9%	-0.6%	2.6%	7.8%	8.8%	10.0%	6.7%	3.0%	-1.3%
West Campus	22.5%	-1.1%	-2.0%	3.4%	9.2%	9.0%	10.7%	6.4%	2.2%	-3.3%
East Campus	19.4%	-0.9%	0.9%	2.7%	9.4%	9.4%	13.0%	8.7%	-0.5%	0.3%
Osceola Campus	28.4%	3.6%	1.9%	8.2%	19.0%	21.3%	23.7%	11.5%	2.7%	0.9%
Winter Park Campus	30.4%	9.4%	9.6%	-3.2%	22.8%	11.6%	25.0%	7.2%	-1.9%	0.7%
Lake Nona Campus									79.3%	35.8%

College-wide Unduplicated Headcount Fall Term by Gender

Unduplicated College-wide (counted once per term regardless of the number of courses taken or number of campuses attended)



Unduplicated Fall Term Headcount by Gender College-wide and Course Campus

Unduplicated College-wide (counted once per term regardless of the number of courses taken or number of campuses attended)

Campus unduplicated headcounts (enrolled students counted once per course meeting location regardless of number of courses taken or number of campuses attended)

Headcounts are duplicated across campuses and unduplicated within campuses; therefore, the sum of the campus headcounts is greater than the college unduplicated headcount.

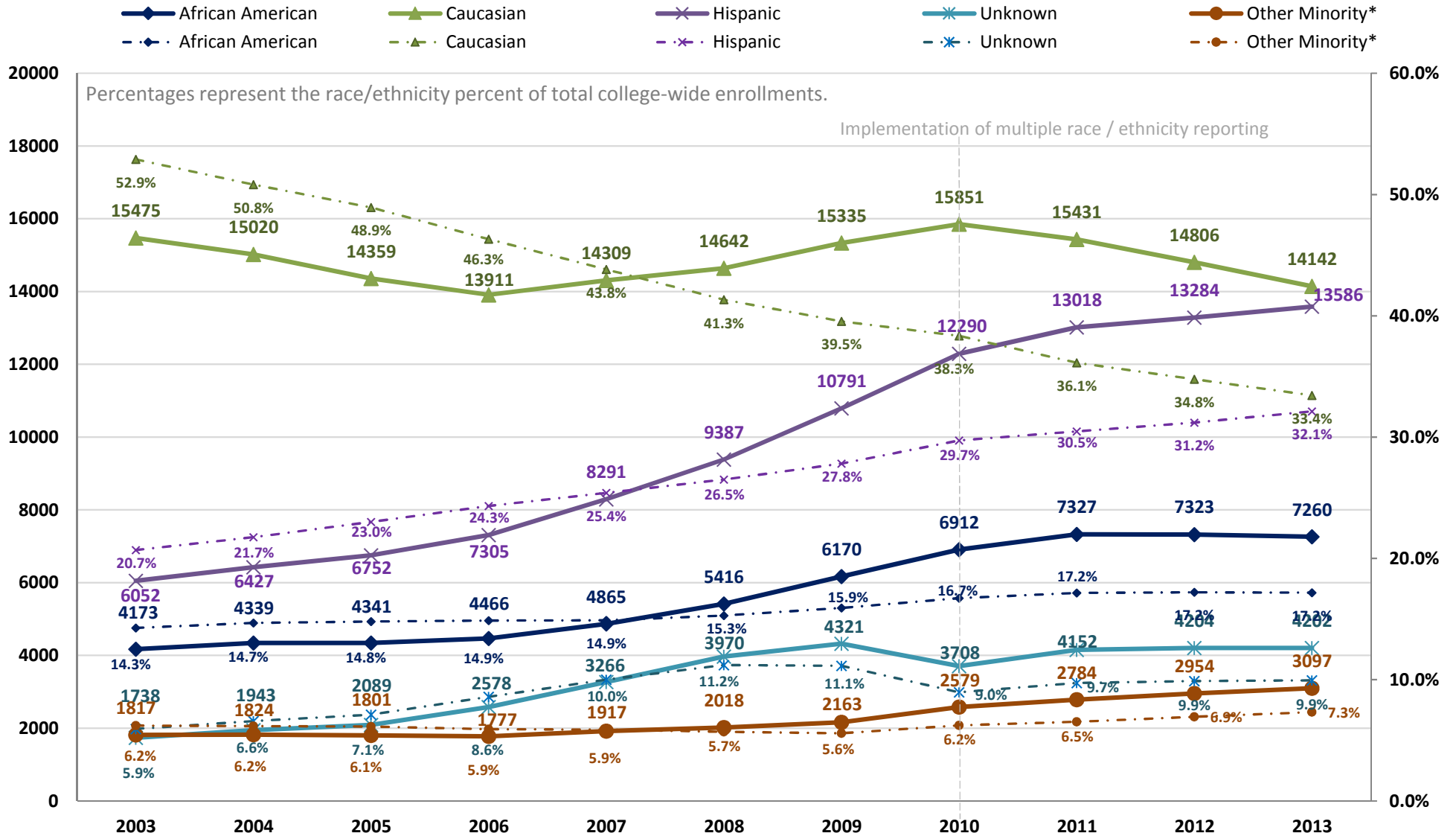
	Fall Term										
	2003	2004	2005	2006	2007	2008	2009	2010	2011	2012	2013
College-wide	29255	29553	29342	30037	32648	35433	38780	41340	42712	42571	42287
Female	16911	16951	16892	17219	18553	20108	21833	23213	23823	23869	23278
Male	12246	12504	12350	12724	13943	15138	16784	17968	18300	18360	18786
Not Indicated	98	98	100	94	152	187	163	159	589	342	223
West Campus	13064	13204	12957	13106	14612	15932	17468	18078	19071	18468	17923
Female	7736	7714	7591	7643	8462	9258	9918	10304	10795	10489	9932
Male	5279	5438	5329	5436	6101	6603	7478	7704	7995	7833	7893
Not Indicated	49	52	37	27	49	71	72	70	281	146	98
East Campus	13803	14148	14222	14569	16040	17134	19234	20808	20533	20831	20736
Female	7552	7655	7801	8009	8779	9283	10407	11162	11076	11291	11105
Male	6210	6448	6367	6506	7181	7770	8745	9581	9286	9410	9531
Not Indicated	41	45	54	54	80	81	82	65	171	130	100
Osceola Campus	4968	5130	5174	5646	6499	7858	9583	10756	10931	11041	10677
Female	3088	3204	3199	3469	3935	4747	5731	6452	6520	6518	6224
Male	1863	1916	1956	2157	2519	3045	3802	4258	4236	4387	4380
Not Indicated	17	10	19	20	45	66	50	46	174	136	73
Winter Park Campus	1800	1926	2246	2071	2522	2723	3341	3586	3334	3673	3643
Female	1141	1215	1408	1256	1544	1571	1918	2121	1989	2186	2095
Male	652	707	832	809	964	1140	1412	1451	1325	1468	1533
Not Indicated	7	4	6	6	14	12	11	14	20	19	15
Lake Nona Campus								556	1263	1767	2119
Female								326	756	1067	1186
Male								229	487	680	913
Not Indicated								1	20	20	20
	Percentage Change From Previous Fall										
College-wide	-0.7%	1.0%	-0.7%	2.4%	8.7%	8.5%	9.4%	6.6%	3.3%	3.0%	-1.0%
Female	-0.4%	0.2%	-0.3%	1.9%	7.7%	8.4%	8.6%	6.3%	2.6%	2.8%	-2.3%
Male	-1.6%	2.1%	-1.2%	3.0%	9.6%	8.6%	10.9%	7.1%	1.8%	2.2%	2.7%
Not Indicated	292.0%	0.0%	2.0%	-6.0%	61.7%	23.0%	-12.8%	-2.5%	270.4%	115.1%	-62.1%

College-wide Unduplicated Headcount

Fall Term by Race / Ethnicity

Unduplicated Headcount: Students are counted once during the term of enrollment, regardless of the number of campuses attended or the number of courses attempted.

*Other Minority includes Asian, Hawaiian, Native American and Multiracial



Unduplicated Fall Term Headcount by Race / Ethnicity College-wide and by Course Campus

Unduplicated College-wide (counted once per term regardless of the number of courses taken or number of campuses attended)

Campus unduplicated headcounts (enrolled students counted once per course meeting location regardless of number of courses taken or number of campuses attended)

Headcounts are duplicated across campuses and unduplicated within campuses; therefore, the sum of the campus headcounts is greater than the college unduplicated headcount.

Other Minority includes Asian, Hawaiian, Native American and Multiracial

	Fall Term										
	2003	2004	2005	2006	2007	2008	2009	2010	2011	2012	2013
College-wide	29255	29553	29342	30037	32648	35433	38780	41340	42712	42571	42287
African American	4173	4339	4341	4466	4865	5416	6170	6912	7327	7323	7260
Asian	1688	1693	1660	1649	1790	1890	2012	1989	1910	1897	1900
Caucasian	15475	15020	14359	13911	14309	14642	15335	15851	15431	14806	14142
Hawaiian							36	101	118	149	171
Hispanic	6052	6427	6752	7305	8291	9387	10791	12290	13018	13284	13586
Native American	129	131	141	128	127	128	115	121	128	125	124
Multiracial								368	628	783	902
Unknown	1738	1943	2089	2578	3266	3970	4321	3708	4152	4204	4202
Other Minority*	1817	1824	1801	1777	1917	2018	2163	2579	2784	2954	3097
West Campus	13064	13204	12957	13106	14612	15932	17468	18078	19071	18468	17898
African American	2569	2701	2586	2663	2998	3329	3802	4145	4481	4293	4246
Asian	872	947	910	898	963	1038	1066	1030	1006	988	1000
Caucasian	6381	6157	5873	5659	5957	6163	6457	6542	6550	6181	5868
Hawaiian							19	50	63	75	57
Hispanic	2269	2358	2496	2586	3107	3461	3954	4362	4755	4730	4676
Native American	61	66	67	58	60	62	56	68	62	49	57
Multiracial								162	271	362	365
Unknown	912	975	1025	1242	1527	1879	2114	1719	1883	1790	1629
Other Minority*	933	1013	977	956	1023	1100	1141	1310	1402	1474	1479
East Campus	13803	14148	14222	14569	16040	17134	19234	20808	20533	20831	20736
African American	1353	1468	1593	1586	1701	1956	2288	2733	2673	2911	2924
Asian	753	704	692	700	777	816	911	908	847	829	828
Caucasian	8153	8030	7712	7595	7975	8057	8757	9078	8715	8504	8178
Hawaiian							21	43	52	63	72
Hispanic	2776	3039	3195	3452	3958	4385	5123	6018	6205	6401	6523
Native American	55	57	73	62	55	62	68	56	60	71	63
Multiracial								203	334	397	485
Unknown	713	850	957	1174	1574	1858	2066	1769	1647	1655	1663
Other Minority*	808	761	765	762	832	878	1000	1210	1293	1360	1448
Osceola Campus	4968	5130	5174	5646	6499	7858	9583	10756	10931	11041	10677
African American	471	476	529	607	709	902	1138	1327	1362	1355	1293
Asian	253	258	265	272	333	362	447	458	446	441	430
Caucasian	2204	2204	2048	2056	2178	2595	3080	3407	3215	3101	2635
Hawaiian							9	27	28	33	44
Hispanic	1725	1843	1943	2225	2596	3142	3928	4481	4595	4613	4676
Native American	24	19	22	24	27	20	18	18	26	18	27
Multiracial								74	130	195	198
Unknown	291	330	367	462	656	837	963	964	1129	1285	1374
Other Minority*	277	277	287	296	360	382	474	577	630	687	699

Unduplicated Fall Term Headcount by Race / Ethnicity College-wide and by Course Campus

Unduplicated College-wide (counted once per term regardless of the number of courses taken or number of campuses attended)

Campus unduplicated headcounts (enrolled students counted once per course meeting location regardless of number of courses taken or number of campuses attended)

Headcounts are duplicated across campuses and unduplicated within campuses; therefore, the sum of the campus headcounts is greater than the college unduplicated headcount.

Other Minority includes Asian, Hawaiian, Native American and Multiracial

	Fall Term										
	2003	2004	2005	2006	2007	2008	2009	2010	2011	2012	2013
Winter Park Campus	1800	1926	2246	2071	2522	2723	3341	3586	3334	3673	3643
African American	286	310	294	242	311	337	432	502	501	533	493
Asian	52	57	78	63	84	93	111	117	99	107	127
Caucasian	1120	1202	1438	1296	1469	1569	1749	1838	1632	1762	1660
Hawaiian							2	7	4	4	12
Hispanic	247	244	298	298	426	436	630	768	762	900	944
Native American	9	17	11	8	13	12	14	14	11	19	10
Multiracial								41	62	68	88
Unknown	86	96	127	164	219	276	403	299	263	280	309
Other Minority*	61	74	89	71	97	105	127	179	176	198	237
Lake Nona Campus								556	1263	1263	2119
African American								44	112	112	202
Asian								32	54	54	76
Caucasian								245	429	429	659
Hawaiian								0	1	1	12
Hispanic								180	385	385	762
Native American								3	7	7	6
Multiracial								9	20	20	47
Unknown								43	255	255	355
Other Minority*								44	82	82	141
	Race/Ethnicity Percentage of Total Location Headcounts										
College-wide											
African American	14.3%	14.7%	14.8%	14.9%	14.9%	15.3%	15.9%	16.7%	17.2%	17.2%	17.2%
Asian	5.8%	5.7%	5.7%	5.5%	5.5%	5.3%	5.2%	4.8%	4.5%	4.5%	4.5%
Caucasian	52.9%	50.8%	48.9%	46.3%	43.8%	41.3%	39.5%	38.3%	36.1%	34.8%	33.4%
Hawaiian	0.0%	0.0%	0.0%	0.0%	0.0%	0.0%	0.1%	0.2%	0.3%	0.4%	0.4%
Hispanic	20.7%	21.7%	23.0%	24.3%	25.4%	26.5%	27.8%	29.7%	30.5%	31.2%	32.1%
Native American	0.4%	0.4%	0.5%	0.4%	0.4%	0.4%	0.3%	0.3%	0.3%	0.3%	0.3%
Multiracial	0.0%	0.0%	0.0%	0.0%	0.0%	0.0%	0.0%	0.9%	1.5%	1.8%	2.1%
Unknown	5.9%	6.6%	7.1%	8.6%	10.0%	11.2%	11.1%	9.0%	9.7%	9.9%	9.9%
Other Minority*	6.2%	6.2%	6.1%	5.9%	5.9%	5.7%	5.6%	6.2%	6.5%	6.9%	7.3%
West Campus											
African American	19.7%	20.5%	20.0%	20.3%	20.5%	20.9%	21.8%	22.9%	23.5%	23.2%	23.7%
Asian	6.7%	7.2%	7.0%	6.9%	6.6%	6.5%	6.1%	5.7%	5.3%	5.3%	5.6%
Caucasian	48.8%	46.6%	45.3%	43.2%	40.8%	38.7%	37.0%	36.2%	34.3%	33.5%	32.8%
Hawaiian	0.0%	0.0%	0.0%	0.0%	0.0%	0.0%	0.1%	0.3%	0.3%	0.4%	0.3%
Hispanic	17.4%	17.9%	19.3%	19.7%	21.3%	21.7%	22.6%	24.1%	24.9%	25.6%	26.1%
Native American	0.5%	0.5%	0.5%	0.4%	0.4%	0.4%	0.3%	0.4%	0.3%	0.3%	0.3%
Multiracial	0.0%	0.0%	0.0%	0.0%	0.0%	0.0%	0.0%	0.9%	1.4%	2.0%	2.0%
Unknown	7.0%	7.4%	7.9%	9.5%	10.5%	11.8%	12.1%	9.5%	9.9%	9.7%	9.1%
Other Minority*	7.1%	7.7%	7.5%	7.3%	7.0%	6.9%	6.5%	7.2%	7.4%	8.0%	8.3%

Unduplicated Fall Term Headcount by Race / Ethnicity College-wide and by Course Campus

Unduplicated College-wide (counted once per term regardless of the number of courses taken or number of campuses attended)

Campus unduplicated headcounts (enrolled students counted once per course meeting location regardless of number of courses taken or number of campuses attended)

Headcounts are duplicated across campuses and unduplicated within campuses; therefore, the sum of the campus headcounts is greater than the college unduplicated headcount.

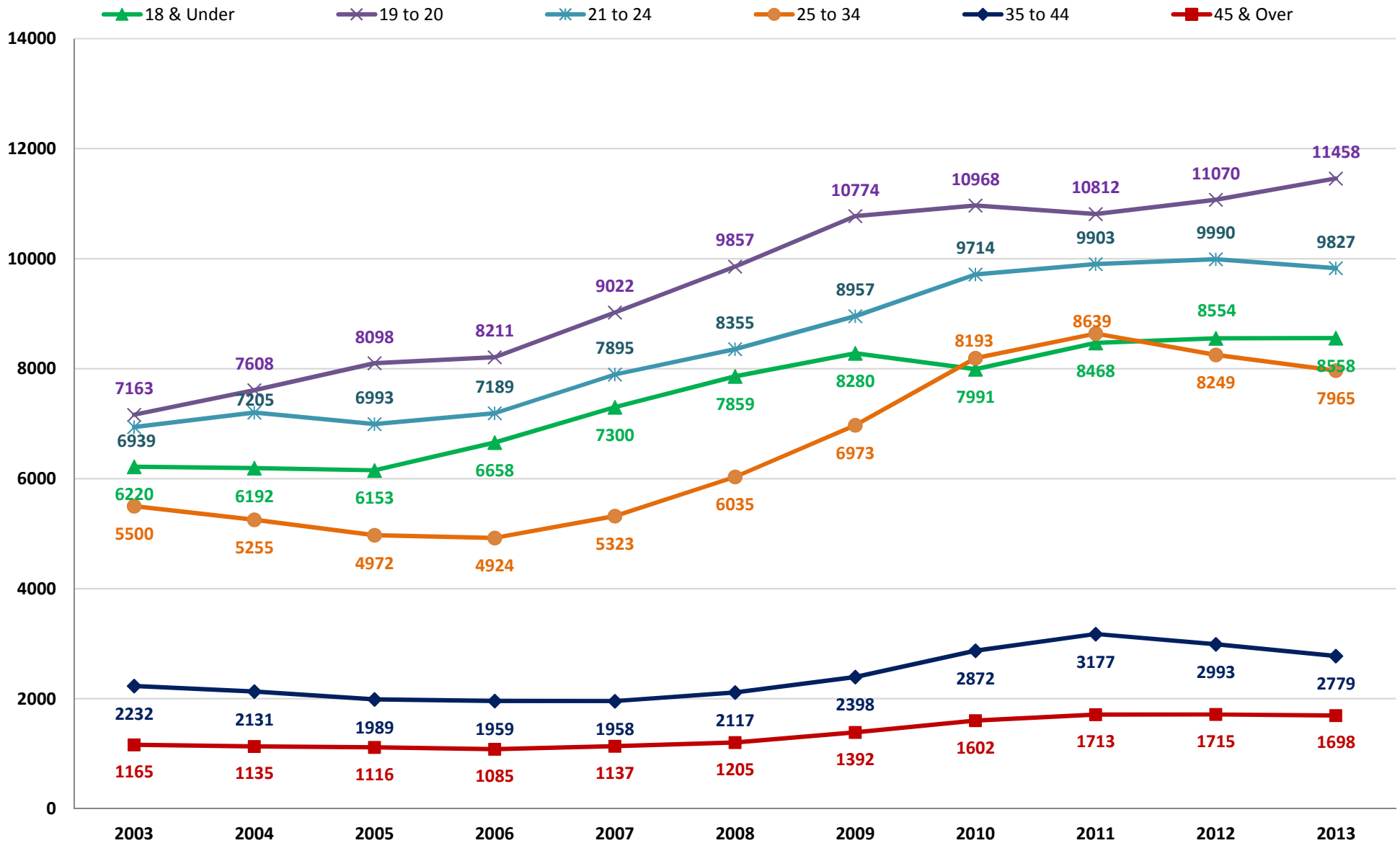
Other Minority includes Asian, Hawaiian, Native American and Multiracial

	Race/Ethnicity Percentage of Total Location Headcounts										
	2003	2004	2005	2006	2007	2008	2009	2010	2011	2012	2013
East Campus											
African American	9.8%	10.4%	11.2%	10.9%	10.6%	11.4%	11.9%	13.1%	13.0%	14.0%	14.1%
Asian	5.5%	5.0%	4.9%	4.8%	4.8%	4.8%	4.7%	4.4%	4.1%	4.0%	4.0%
Caucasian	59.1%	56.8%	54.2%	52.1%	49.7%	47.0%	45.5%	43.6%	42.4%	40.8%	39.4%
Hawaiian	0.0%	0.0%	0.0%	0.0%	0.0%	0.0%	0.1%	0.2%	0.3%	0.3%	0.3%
Hispanic	20.1%	21.5%	22.5%	23.7%	24.7%	25.6%	26.6%	28.9%	30.2%	30.7%	31.5%
Native American	0.4%	0.4%	0.5%	0.4%	0.3%	0.4%	0.4%	0.3%	0.3%	0.3%	0.3%
Multiracial	0.0%	0.0%	0.0%	0.0%	0.0%	0.0%	0.0%	1.0%	1.6%	1.9%	2.3%
Unknown	5.2%	6.0%	6.7%	8.1%	9.8%	10.8%	10.7%	8.5%	8.0%	7.9%	8.0%
Other Minority*	5.9%	5.4%	5.4%	5.2%	5.2%	5.1%	5.2%	5.8%	6.3%	6.5%	7.0%
Osceola Campus											
African American	9.5%	9.3%	10.2%	10.8%	10.9%	11.5%	11.9%	12.3%	12.5%	12.3%	12.1%
Asian	5.1%	5.0%	5.1%	4.8%	5.1%	4.6%	4.7%	4.3%	4.1%	4.0%	4.0%
Caucasian	44.4%	43.0%	39.6%	36.4%	33.5%	33.0%	32.1%	31.7%	29.4%	28.1%	24.7%
Hawaiian	0.0%	0.0%	0.0%	0.0%	0.0%	0.0%	0.1%	0.3%	0.3%	0.3%	0.4%
Hispanic	34.7%	35.9%	37.6%	39.4%	39.9%	40.0%	41.0%	41.7%	42.0%	41.8%	43.8%
Native American	0.5%	0.4%	0.4%	0.4%	0.4%	0.3%	0.2%	0.2%	0.2%	0.2%	0.3%
Multiracial	0.0%	0.0%	0.0%	0.0%	0.0%	0.0%	0.0%	0.7%	1.2%	1.8%	1.9%
Unknown	5.9%	6.4%	7.1%	8.2%	10.1%	10.7%	10.0%	9.0%	10.3%	11.6%	12.9%
Other Minority*	5.6%	5.4%	5.5%	5.2%	5.5%	4.9%	4.9%	5.4%	5.8%	6.2%	6.5%
Winter Park Campus											
African American	15.9%	16.1%	13.1%	11.7%	12.3%	12.4%	12.9%	14.0%	15.0%	14.5%	13.5%
Asian	2.9%	3.0%	3.5%	3.0%	3.3%	3.4%	3.3%	3.3%	3.0%	2.9%	3.5%
Caucasian	62.2%	62.4%	64.0%	62.6%	58.2%	57.6%	52.3%	51.3%	49.0%	48.0%	45.6%
Hawaiian	0.0%	0.0%	0.0%	0.0%	0.0%	0.0%	0.1%	0.2%	0.1%	0.1%	0.3%
Hispanic	13.7%	12.7%	13.3%	14.4%	16.9%	16.0%	18.9%	21.4%	22.9%	24.5%	25.9%
Native American	0.5%	0.9%	0.5%	0.4%	0.5%	0.4%	0.4%	0.4%	0.3%	0.5%	0.3%
Multiracial	0.0%	0.0%	0.0%	0.0%	0.0%	0.0%	0.0%	1.1%	1.9%	1.9%	2.4%
Unknown	4.8%	5.0%	5.7%	7.9%	8.7%	10.1%	12.1%	8.3%	7.9%	7.6%	8.5%
Other Minority*	3.4%	3.8%	4.0%	3.4%	3.8%	3.9%	3.8%	5.0%	5.3%	5.4%	6.5%
Lake Nona Campus											
African American								7.9%	8.9%	8.9%	9.5%
Asian								5.8%	4.3%	4.3%	3.6%
Caucasian								44.1%	34.0%	34.0%	31.1%
Hawaiian								0.0%	0.1%	0.1%	0.6%
Hispanic								32.4%	30.5%	30.5%	36.0%
Native American								0.5%	0.6%	0.6%	0.3%
Multiracial								1.6%	1.6%	1.6%	2.2%
Unknown								7.7%	20.2%	20.2%	16.8%
Other Minority*								7.9%	6.5%	6.5%	6.7%

College-wide Unduplicated Headcount

Fall Term by Age Group

Unduplicated College-wide (counted once per term regardless of the number of courses taken or number of campuses attended)



Unduplicated **Fall Term** Headcount by Age Group College-wide and by Course Campus

Unduplicated College-wide (counted once per term regardless of the number of courses taken or number of campuses attended)

Campus unduplicated headcounts (enrolled students counted once per course meeting location regardless of number of courses taken or number of campuses attended)

Headcounts are duplicated across campuses and unduplicated within campuses; therefore, the sum of the campus headcounts is greater than the college unduplicated headcount.

	Fall Term										
	2003	2004	2005	2006	2007	2008	2009	2010	2011	2012	2013
College-wide	29255	29553	29342	30037	32648	35433	38780	41340	42712	42571	42287
18 & Under	6220	6192	6153	6658	7300	7859	8280	7991	8468	8554	8558
19 to 20	7163	7608	8098	8211	9022	9857	10774	10968	10812	11070	11458
21 to 24	6939	7205	6993	7189	7895	8355	8957	9714	9903	9990	9827
25 to 34	5500	5255	4972	4924	5323	6035	6973	8193	8639	8249	7965
35 to 44	2232	2131	1989	1959	1958	2117	2398	2872	3177	2993	2779
45 & Over	1165	1135	1116	1085	1137	1205	1392	1602	1713	1715	1698
No Birth Date	36	27	21	11	13	5	6				2
West Campus	13064	13204	12957	13106	14612	15932	17468	18078	19071	18468	17923
18 & Under	2333	2278	2156	2338	2781	3000	3083	3129	3153	3052	2823
19 to 20	3002	3194	3314	3304	3634	4080	4489	4257	4250	4337	4352
21 to 24	3163	3282	3233	3390	3756	4006	4293	4417	4675	4500	4378
25 to 34	2882	2767	2657	2538	2829	3136	3618	4041	4484	4178	4093
35 to 44	1140	1132	1042	1028	1035	1118	1266	1430	1639	1538	1459
45 & Over	521	532	545	505	572	588	716	804	870	863	818
No Birth Date	23	19	10	3	5	4	3				0
East Campus	13803	14148	14222	14569	16040	17134	19234	20808	20533	20831	20736
18 & Under	2901	2826	2768	3057	3259	3398	3749	3511	3606	3702	3717
19 to 20	3834	4081	4357	4444	4996	5370	5870	6148	5901	5996	6152
21 to 24	3584	3789	3693	3729	4163	4353	4774	5201	5041	5215	5146
25 to 34	2265	2210	2173	2197	2405	2735	3283	4019	3981	3926	3761
35 to 44	755	757	778	715	770	794	997	1269	1298	1256	1164
45 & Over	452	476	442	421	444	484	559	660	706	736	795
No Birth Date	12	9	11	6	3	0	2				1
Osceola Campus	4968	5130	5174	5646	6499	7858	9583	10756	10931	11041	10677
18 & Under	1497	1588	1629	1677	1881	2216	2382	2348	2432	2486	2560
19 to 20	1137	1232	1444	1494	1811	2183	2716	2855	2724	2872	2987
21 to 24	924	947	901	1076	1366	1612	1957	2341	2360	2396	2144
25 to 34	837	826	710	809	867	1177	1656	2058	2144	2088	1846
35 to 44	410	380	328	405	409	468	591	794	862	810	732
45 & Over	154	153	159	183	160	201	278	360	409	389	407
No Birth Date	9	4	3	2	5	1	3				1
Winter Park Campus	1800	1926	2246	2071	2522	2723	3341	3586	3334	3673	3643
18 & Under	318	363	418	425	483	515	575	577	484	530	538
19 to 20	419	470	550	551	687	754	904	919	765	967	997
21 to 24	411	467	567	504	642	720	840	859	890	897	934
25 to 34	358	371	447	393	470	513	709	800	813	842	803
35 to 44	164	152	166	114	157	147	195	280	263	296	238
45 & Over	127	101	97	84	82	74	118	151	119	141	133
No Birth Date	3	2	1	0	1	0	0				0

Unduplicated **Fall Term** Headcount by **Age Group** College-wide and by Course Campus

Unduplicated College-wide (counted once per term regardless of the number of courses taken or number of campuses attended)

Campus unduplicated headcounts (enrolled students counted once per course meeting location regardless of number of courses taken or number of campuses attended)

Headcounts are duplicated across campuses and unduplicated within campuses, therefore the sum of the campus headcounts is greater than the college unduplicated headcount.

	Fall Term										
	2003	2004	2005	2006	2007	2008	2009	2010	2011	2012	2013
Lake Nona Campus								556	1263	1767	2119
18 & Under								222	440	629	751
19 to 20								111	229	428	530
21 to 24								94	229	294	356
25 to 34								91	257	278	344
35 to 44								25	80	97	92
45 & Over								13	28	41	45
No Birth Date											1

College-wide Unduplicated Headcount

Fall Term by Student Status

Unduplicated College-wide (counted once per term regardless of the number of courses taken or number of campuses attended)

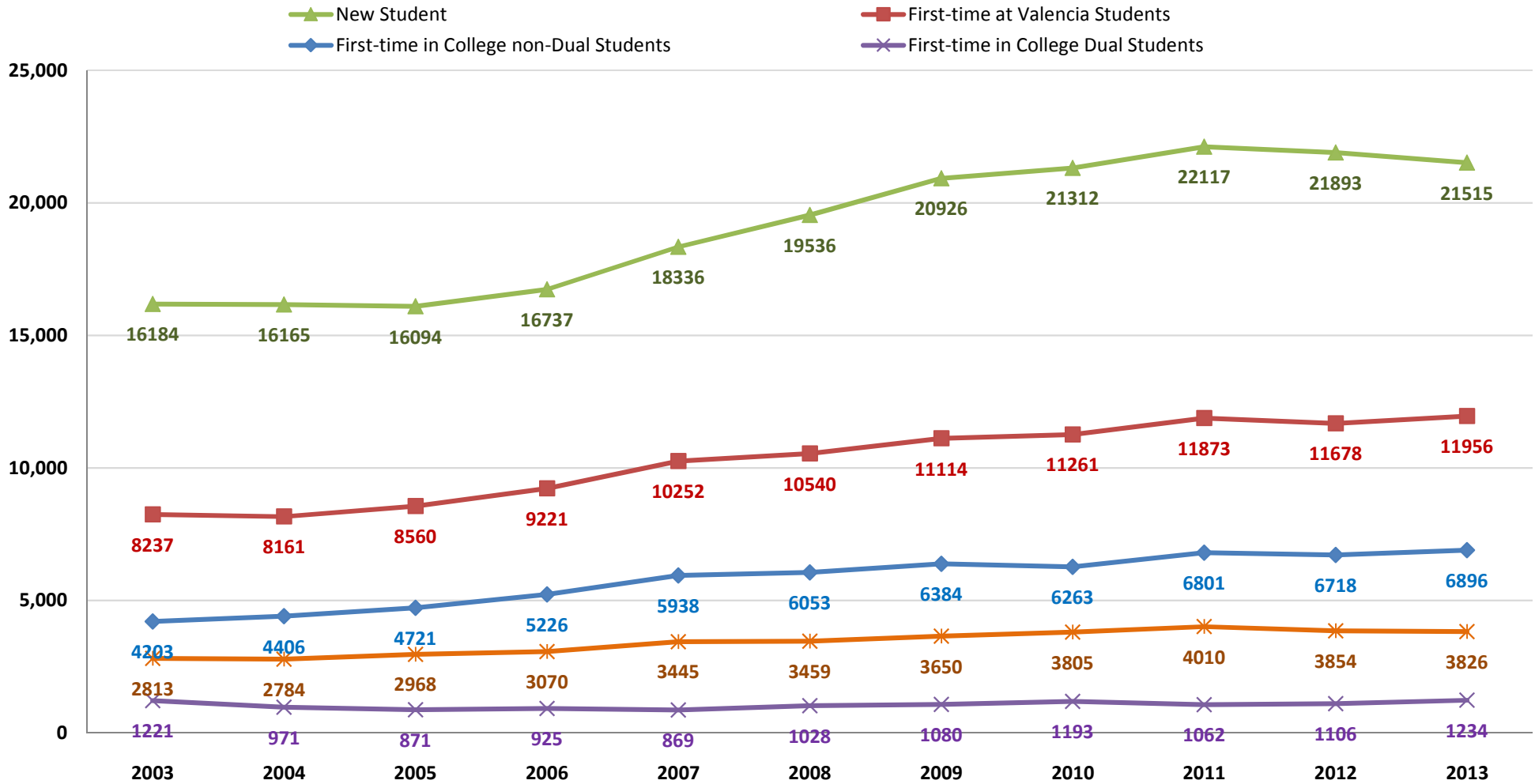
New Student: A student who has earned fewer than 15 college credits at Valencia College

First-time at Valencia Students: Students attending Valencia for the first time. This category includes first-time in college nondual enrollments, first-time in college dual enrollments and first time at Valencia transfer students.

First-time in College Students: Students attending Valencia for the first-time who have no transfer history and are not first-time dual enrollment students.

First-time Dual Enrollment Students: Dual enrollment students attending Valencia for the first-time who have no transfer history.

First-time Transfer Students: Students who are not in either first-time in college category and are attending Valencia for the first time.



Unduplicated **Fall Term** Headcount by **Student Status** Across College-wide and Course Campus

Unduplicated College-wide (counted once per term regardless of the number of courses taken or number of campuses attended)

New Student: A student who has earned fewer than 15 college credits at Valencia College

First-time at Valencia Students: Students attending Valencia for the first time. This category includes first-time in college nondual enrollments, first-time in college dual enrollments and first time at Valencia transfer students.

First-time in College Students: Students attending Valencia for the first-time who have no transfer history and are not first-time dual enrollment students.

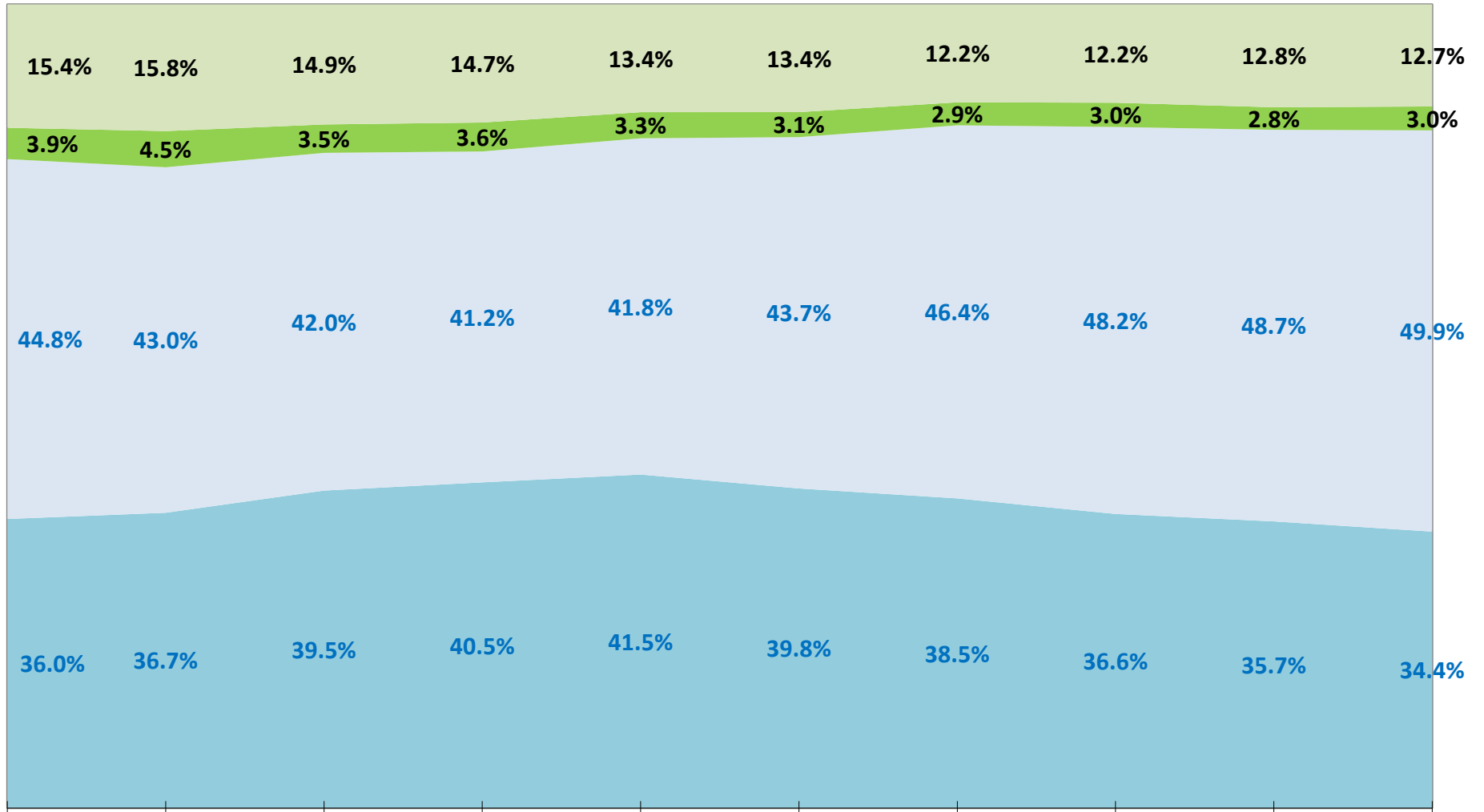
First-time Dual Enrollment Students: Dual enrollment students attending Valencia for the first-time who have no transfer history.

First-time Transfer Students: Students who are not in either first-time in college category and are attending Valencia for the first time.

	Fall Term										
	2003	2004	2005	2006	2007	2008	2009	2010	2011	2012	2013
College-wide	29255	29553	29342	30037	32648	35433	38780	41340	42712	42571	11958
First-time at Valencia Students	8237	8161	8560	9221	10252	10540	11114	11261	11873	11678	11956
First-time in College non-Dual Students	4203	4406	4721	5226	5938	6053	6384	6263	6801	6718	6896
First-time in College Dual Students	1221	971	871	925	869	1028	1080	1193	1062	1106	1234
First-time Transfer Students	2813	2784	2968	3070	3445	3459	3650	3805	4010	3854	3826
New Student	16,184	16,165	16,094	16,737	18,336	19,536	20,926	21,312	22,117	21,893	21,515
West Campus	13064	13204	12957	13106	14612	15932	17468	18078	19071	18468	17923
First-time at Valencia Students	3169	3145	3166	3480	4081	4151	4525	4552	4911	4427	4328
First-time in College non-Dual Students	1664	1764	1876	2044	2451	2367	2605	2557	2821	2515	2553
First-time in College Dual Students	450	374	244	317	292	421	455	534	448	412	370
First-time Transfer Students	1055	1007	1046	1119	1338	1363	1465	1461	1642	1500	1405
New Student	6,732	6,657	6,429	6,658	7,598	8,064	8,886	8,930	9,350	8,721	8,398
East Campus	13803	14148	14222	14569	16040	17134	19234	20808	20533	20831	20736
First-time at Valencia Students	4132	4108	4131	4511	4925	5019	5383	5459	5651	5621	5690
First-time in College non-Dual Students	1968	2094	2133	2370	2572	2692	2919	2864	3083	3111	3124
First-time in College Dual Students	537	370	264	346	341	323	293	342	312	297	329
First-time Transfer Students	1627	1644	1734	1795	2012	2004	2171	2253	2256	2213	2237
New Student	7,452	7,585	7,548	7,907	8,709	9,071	9,852	10,014	9,964	10,076	9,909
Osceola Campus	4968	5130	5174	5646	6499	7858	9583	10756	10931	11041	10677
First-time at Valencia Students	1575	1508	1701	1794	2144	2415	2740	2870	2734	2826	2921
First-time in College non-Dual Students	845	882	984	1101	1384	1478	1592	1643	1670	1652	1726
First-time in College Dual Students	327	279	337	241	229	316	351	316	290	367	466
First-time Transfer Students	403	347	380	452	531	621	797	911	774	807	729
New Student	3,046	2,971	3,078	3,228	3,767	4,461	5,242	5,567	5,425	5,520	5,283
Winter Park Campus	1800	1926	2246	2071	2522	2723	3341	3586	3334	3673	3643
First-time at Valencia Students	569	607	718	679	812	856	1022	1018	920	942	973
First-time in College non-Dual Students	339	371	378	399	462	441	560	545	517	523	522
First-time in College Dual Students	16	29	53	57	46	71	63	83	46	59	56
First-time Transfer Students	214	207	287	223	304	344	399	390	357	360	395
New Student	1,118	1,189	1,315	1,198	1,451	1,558	1,864	1,889	1,701	1,856	1,796
Lake Nona Campus								556	1263	1767	2119
First-time at Valencia Students								227	398	644	777
First-time in College non-Dual Students								88	200	320	421
First-time in College Dual Students								63	74	153	161
First-time Transfer Students								76	124	171	195
New Student								362	812	1095	1287

Full-Time & Part-Time Student Status by Degree Intent Fall 2005 - Fall 2014

- Non-Degree-Seeking, Part-Time
- Non-Degree-Seeking, Full-Time
- Degree-Seeking, Part-Time
- Degree-Seeking, Full-Time



Fall-2005 80.7% Fall-2006 79.7% Fall-2007 81.5% Fall-2008 81.7% Fall-2009 83.3% Fall-2010 83.5% Fall-2011 84.9% Fall-2012 84.7% Fall-2013 84.4% Fall-2014 84.3%

Term and Total Percent Degree-Seeking

Full-Time & Part-Time Student Status by Degree Intent Fall 2005 - Fall 2014

Categories and Measures	2005	2006	2007	2008	2009	2010	2011	2012	2013	2014
Overall Percent Degree-Seeking	80.7%	79.7%	81.5%	81.7%	83.3%	83.5%	84.9%	84.7%	84.4%	84.3%
Overall Percent Full Time	39.9%	41.2%	43.0%	44.1%	44.7%	42.9%	41.4%	39.6%	38.5%	37.4%

Degree-Seeking, Full-Time	36.0%	36.7%	39.5%	40.5%	41.5%	39.8%	38.5%	36.6%	35.7%	34.4%
Degree-Seeking, Part-Time	44.8%	43.0%	42.0%	41.2%	41.8%	43.7%	46.4%	48.2%	48.7%	49.9%
Non-Degree-Seeking, Full-Time	3.9%	4.5%	3.5%	3.6%	3.3%	3.1%	2.9%	3.0%	2.8%	3.0%
Non-Degree-Seeking, Part-Time	15.4%	15.8%	14.9%	14.7%	13.4%	13.4%	12.2%	12.2%	12.8%	12.7%
Grand Total	100.0%	100.0%	100.0%	100.0%	100.0%	100.0%	100.0%	100.0%	200.0%	300.0%

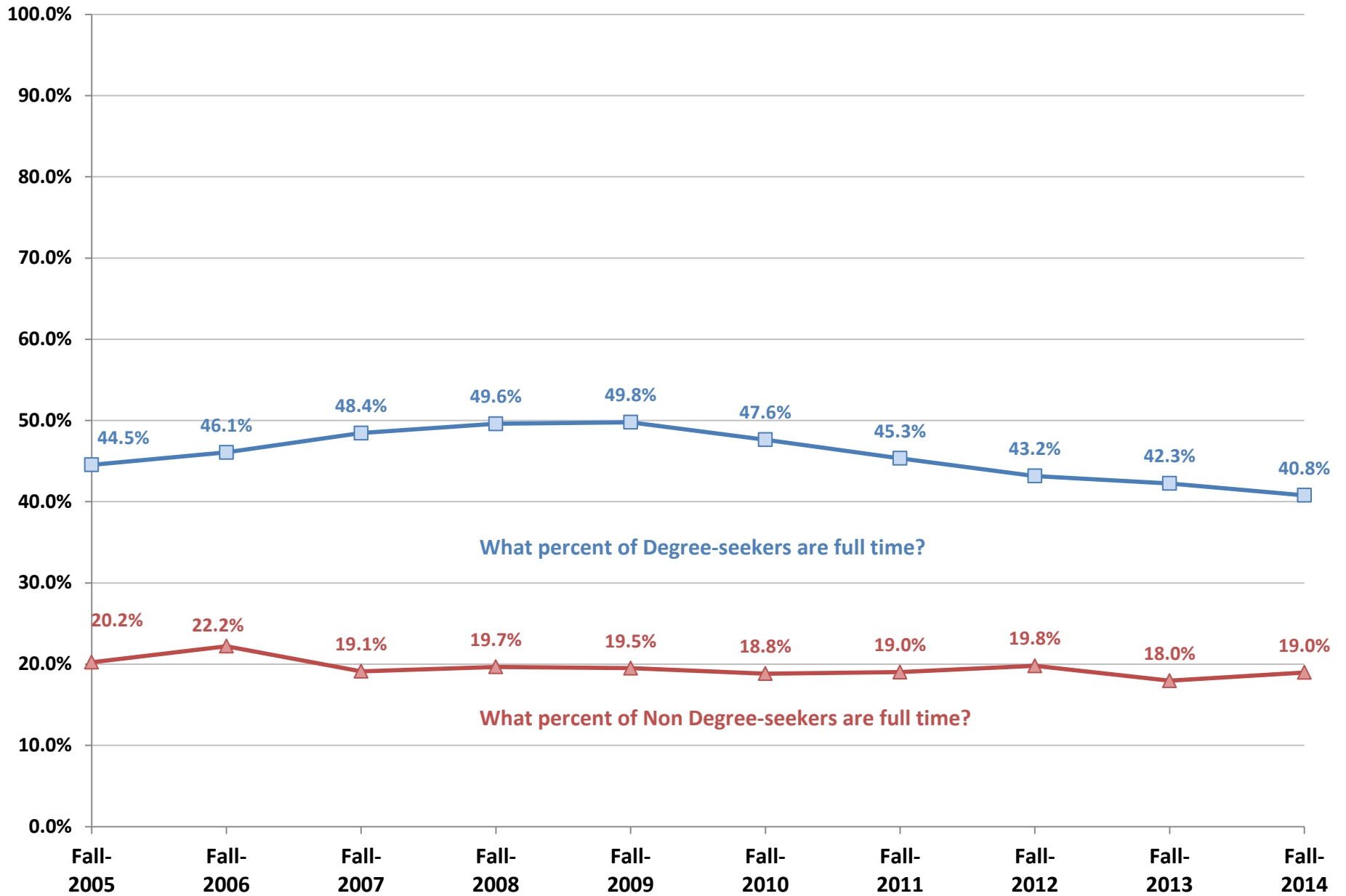
Counts	Fall-2005	Fall-2006	Fall-2007	Fall-2008	Fall-2009	Fall-2010	Fall-2011	Fall-2012	Fall-2013	Fall-2014
Full Time, Degree-Seeking	10,552	11,034	12,894	14,356	16,090	16,436	16,453	15,575	15,079	14,861
Full Time, Non-Degree-Seeking	1,144	1,353	1,154	1,276	1,261	1,287	1,223	1,286	1,186	1,286
Total Full Time	11,696	12,387	14,048	15,632	17,351	17,723	17,676	16,861	16,265	16,147
Part Time, Degree-Seeking	13,139	12,913	13,720	14,590	16,225	18,072	19,829	20,499	20,606	21,575
Part Time, Non-Degree-Seeking	4,507	4,737	4,880	5,211	5,204	5,545	5,207	5,212	5,416	5,492
Total Part Time	17,646	17,650	18,600	19,801	21,429	23,617	25,036	25,711	26,022	27,067
Grand Total	29,553	29,342	30,037	32,648	35,433	38,780	41,340	43,393	43,394	43,395

Percents	Fall-2005	Fall-2006	Fall-2007	Fall-2008	Fall-2009	Fall-2010	Fall-2011	Fall-2012	Fall-2013	Fall-2014
Full Time, Degree-Seeking	90.2%	89.1%	91.8%	91.8%	92.7%	92.7%	93.1%	92.4%	92.7%	92.0%
Full Time, Non-Degree-Seeking	9.8%	10.9%	8.2%	8.2%	7.3%	7.3%	6.9%	7.6%	7.3%	8.0%
Total Full Time	100.0%	100.0%	100.0%	100.0%	100.0%	100.0%	100.0%	100.0%	100.0%	100.0%
Part Time, Degree-Seeking	74.5%	73.2%	73.8%	73.7%	75.7%	76.5%	79.2%	79.7%	79.2%	79.7%
Part Time, Non-Degree-Seeking	25.5%	26.8%	26.2%	26.3%	24.3%	23.5%	20.8%	20.3%	20.8%	20.3%
Total Part Time	100.0%	100.0%	100.0%	100.0%	100.0%	100.0%	100.0%	100.0%	100.0%	100.0%

Full Time means 12 or more credit hours attempted (for Fall term data)	Over time, students may change the goal they are seeking. The IR SAS warehouse freezes data for each Fall. Therefore, the student goal status is accurate as of each term in which it is reported.
--	--

Percent of Full-Time Students By Degree Intent

Fall Term Only



Percent of Full-Time Students by Degree Intent

Fall Term Only

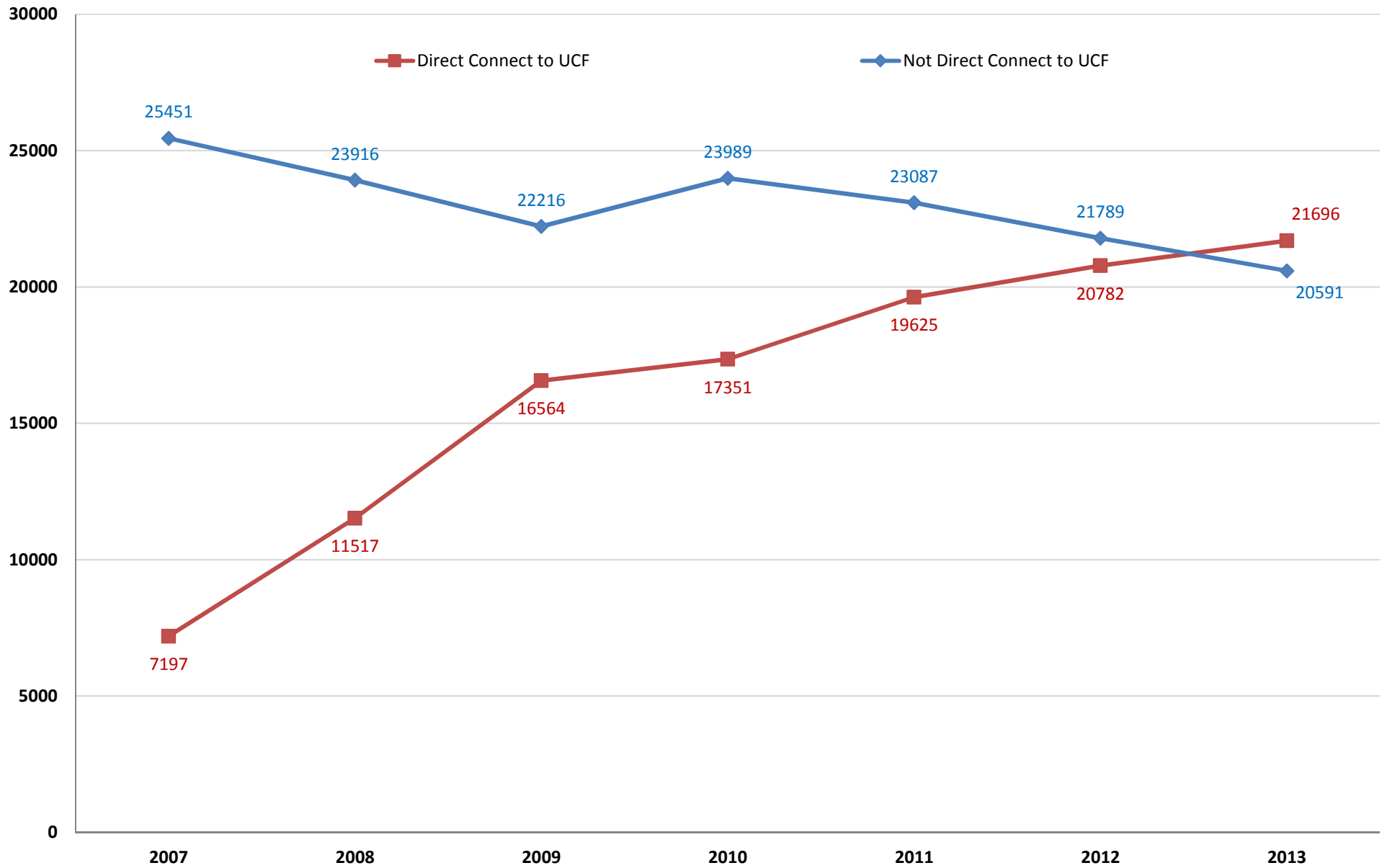
Counts

	Fall-2005	Fall-2006	Fall-2007	Fall-2008	Fall-2009	Fall-2010	Fall-2011	Fall-2012	Fall-2013	Fall-2014
Full Time, Degree-seeking	10552	11034	12894	14356	16089	16436	16453	15575	15079	14861
Part Time, Degree-seeking	13139	12913	13720	14590	16225	18072	19829	20499	20606	21575
Total Degree-seeking	23691	23947	26614	28946	32314	34508	36282	36074	35685	36436
Full Time, Non Degree-seeking	1144	1353	1154	1276	1261	1287	1223	1286	1186	1286
Part Time, Non Degree-seeking	4507	4737	4880	5211	5204	5545	5207	5212	5416	5492
Total Non Degree-seeking	5651	6090	6034	6487	6465	6832	6430	6498	6602	6778
Grand Total	29342	30037	32648	35433	38779	41340	42712	42572	42287	43214

Percents

	Fall-2005	Fall-2006	Fall-2007	Fall-2008	Fall-2009	Fall-2010	Fall-2011	Fall-2012	Fall-2013	Fall-2014
Full Time, Degree-seeking	44.5%	46.1%	48.4%	49.6%	49.8%	47.6%	45.3%	43.2%	42.3%	40.8%
Part Time, Degree-seeking	55.5%	53.9%	51.6%	50.4%	50.2%	52.4%	54.7%	56.8%	57.7%	59.2%
Total Degree-seeking	100.0%	100.0%	100.0%	100.0%	100.0%	100.0%	100.0%	100.0%	100.0%	100.0%
Full Time, Non Degree-seeking	20.2%	22.2%	19.1%	19.7%	19.5%	18.8%	19.0%	19.8%	18.0%	19.0%
Part Time, Non Degree-seeking	79.8%	77.8%	80.9%	80.3%	80.5%	81.2%	81.0%	80.2%	82.0%	81.0%
Total Non Degree-seeking	100.0%	100.0%	100.0%	100.0%	100.0%	100.0%	100.0%	100.0%	100.0%	100.0%

Unduplicated Fall Term Headcount by Direct Connect to UCF



Unduplicated **Fall Term** Headcount by Direct Connect Across College-wide and Course Campus

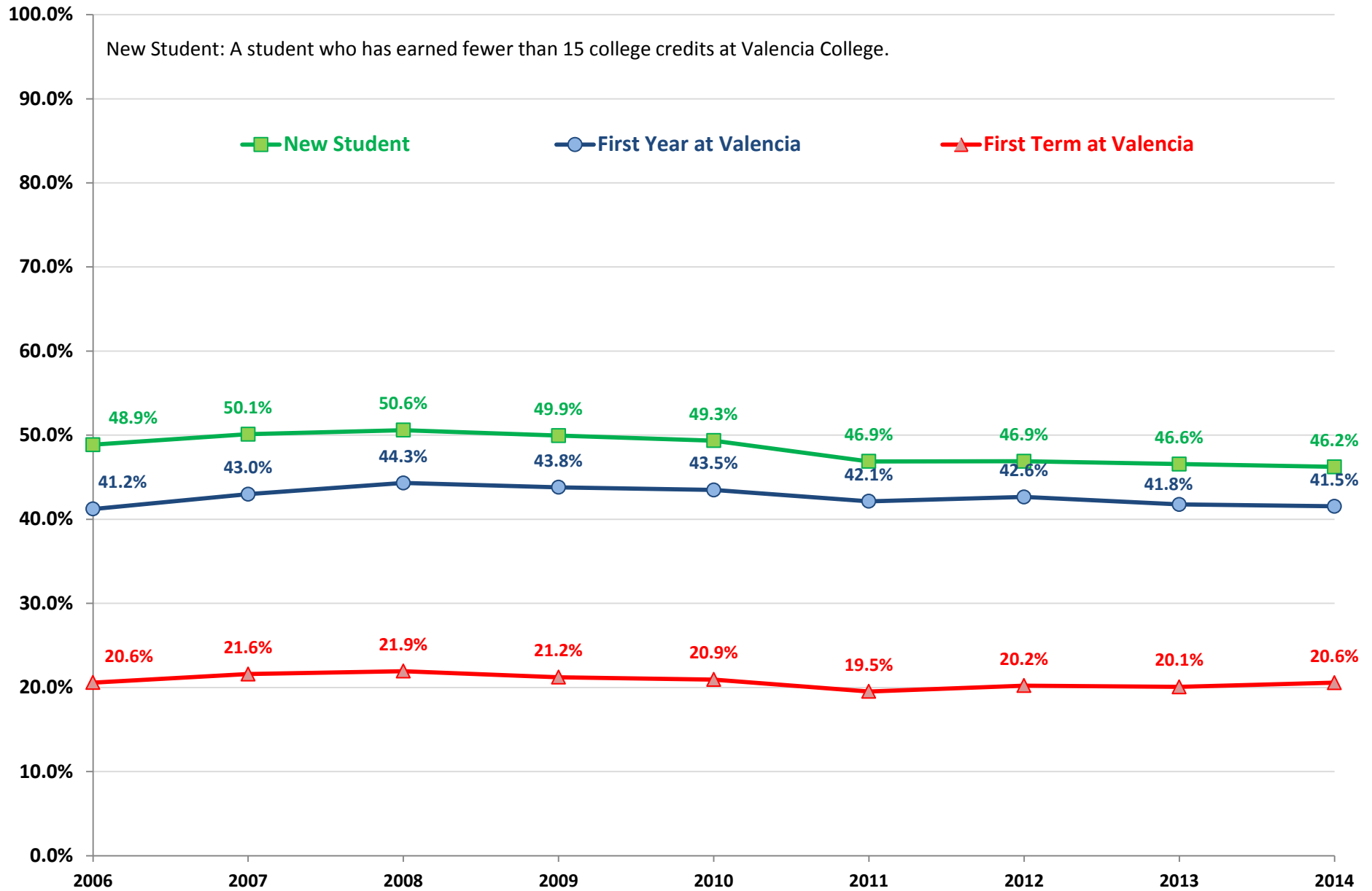
College Unduplicated Headcount: Students counted once college wide per year, regardless of the number of courses attempted, number of terms enrolled during the year or campuses attended

Campus Unduplicated Headcounts: Students counted once on each campus attended per year, regardless of the number of courses attempted or the number of terms enrolled

Headcounts are duplicated across campuses; therefore, the college headcount is less than the sum of the campus headcounts.

	Fall Term						
	2007	2008	2009	2010	2011	2012	2013
College-wide	32648	35433	38780	41340	42712	42571	42287
Direct Connect to UCF	7197	11517	16564	17351	19625	20782	21696
Not Direct Connect to UCF	25451	23916	22216	23989	23087	21789	20591
West Campus	14612	15932	17468	18078	19071	18468	17923
Direct Connect to UCF	2726	4689	6876	7201	8421	8697	9055
Not Direct Connect to UCF	11886	11243	10592	10877	10650	9771	8868
East Campus	16040	17134	19234	20808	20533	20831	20736
Direct Connect to UCF	3965	6018	8770	9305	10053	10729	11037
Not Direct Connect to UCF	12075	11116	10464	11503	10480	10102	9699
Osceola Campus	6499	7858	9583	10756	10931	11041	10677
Direct Connect to UCF	1533	2838	4224	4603	5205	5499	5658
Not Direct Connect to UCF	4966	5020	5359	6153	5726	5542	5019
Winter Park Campus	2522	2723	3341	3586	3334	3673	3643
Direct Connect to UCF	512	794	1400	1568	1582	1794	1902
Not Direct Connect to UCF	2010	1929	1941	2018	1752	1879	1741
Lake Nona Campus				556	1263	1767	2119
Direct Connect to UCF				230	504	788	983
Not Direct Connect to UCF				326	759	979	1136

New Student Share of Total Credit FTE by Reporting Year



New Student Share of Total Credit FTE by Reporting Year

All Campuses	2006	2007	2008	2009	2010	2011	2012	2013	2014
Total FTE	20,395.9	21,101.9	23,363.8	25,999.5	29,022.2	31,308.9	31,688.1	30,226.8	29,669.3
FTAV FTE	4,196.2	4,557.3	5,124.2	5,517.7	6,076.8	6,111.4	6,407.6	6,066.0	6,101.1
First Term at Valencia	20.6%	21.6%	21.9%	21.2%	20.9%	19.5%	20.2%	20.1%	20.6%
First Year at Valencia FTE	8,407.7	9,069.3	10,354.4	11,388.3	12,617.3	13,190.6	13,512.7	12,624.1	12,322.7
First Year at Valencia	41.2%	43.0%	44.3%	43.8%	43.5%	42.1%	42.6%	41.8%	41.5%
First 15 College Credit Hours at Valencia FTE	9,966.6	10,575.9	11,821.3	12,985.1	14,321.1	14,676.0	14,861.4	14,072.2	13,714.1
New Student	48.9%	50.1%	50.6%	49.9%	49.3%	46.9%	46.9%	46.6%	46.2%

East Campus	2006	2007	2008	2009	2010	2011	2012	2013	2014
Total FTE	8,700.2	9,015.2	9,819.1	10,684.1	11,855.4	12,763.4	12,522.3	11,998.5	11,878.9
FTAV FTE	1,841.9	2,013.5	2,171.0	2,308.3	2,478.2	2,434.4	2,544.2	2,486.9	2,481.0
First Term at Valencia	21.2%	22.3%	22.1%	21.6%	20.9%	19.1%	20.3%	20.7%	20.9%
First Year at Valencia FTE	3,733.1	4,066.5	4,467.3	4,845.4	5,227.0	5,343.5	5,399.4	5,178.0	5,042.4
First Year at Valencia	42.9%	45.1%	45.5%	45.4%	44.1%	41.9%	43.1%	43.2%	42.4%
First 15 College Credit Hours at Valencia FTE	4,286.6	4,601.2	4,962.0	5,340.2	5,714.4	5,753.1	5,714.3	5,545.5	5,426.1
New Student	49.3%	51.0%	50.5%	50.0%	48.2%	45.1%	45.6%	46.2%	45.7%

Osceola Campus	2006	2007	2008	2009	2010	2011	2012	2013	2014
Total FTE	2,908.3	3,149.3	3,684.3	4,458.5	5,304.2	6,030.0	6,415.7	6,404.4	6,455.9
FTAV FTE	687.9	757.9	905.6	1,039.2	1,187.2	1,304.9	1,355.5	1,357.4	1,417.9
First Term at Valencia	23.7%	24.1%	24.6%	23.3%	22.4%	21.6%	21.1%	21.2%	22.0%
First Year at Valencia FTE	1,368.1	1,467.0	1,791.6	2,093.4	2,443.9	2,709.8	2,840.8	2,809.8	2,863.1
First Year at Valencia	47.0%	46.6%	48.6%	47.0%	46.1%	44.9%	44.3%	43.9%	44.3%
First 15 College Credit Hours at Valencia FTE	1,628.3	1,738.5	2,071.0	2,426.9	2,833.3	3,076.2	3,199.6	3,187.3	3,234.2
New Student	56.0%	55.2%	56.2%	54.4%	53.4%	51.0%	49.9%	49.8%	50.1%

West Campus	2006	2007	2008	2009	2010	2011	2012	2013	2014
Total FTE	7,992.9	8,120.7	8,910.0	9,846.3	10,669.7	11,255.6	11,509.0	10,599.4	10,116.5
FTAV FTE	1,466.1	1,580.2	1,810.1	1,919.7	2,112.6	2,102.3	2,231.0	1,957.0	1,923.9
First Term at Valencia	18.3%	19.5%	20.3%	19.5%	19.8%	18.7%	19.4%	18.5%	19.0%
First Year at Valencia FTE	2,941.2	3,162.4	3,661.3	3,992.8	4,387.0	4,582.0	4,726.3	4,103.0	3,889.7
First Year at Valencia	36.8%	38.9%	41.1%	40.6%	41.1%	40.7%	41.1%	38.7%	38.4%
First 15 College Credit Hours at Valencia FTE	3,594.3	3,769.1	4,252.7	4,649.9	5,106.5	5,189.1	5,311.8	4,715.1	4,441.0
New Student	45.0%	46.4%	47.7%	47.2%	47.9%	46.1%	46.2%	44.5%	43.9%

Winter Park Campus	2006	2007	2008	2009	2010	2011	2012	2013	2014
Total FTE	794.4	816.7	948.4	1,010.5	1,192.9	1,260.0	1,240.9	1,221.2	1,201.9
FTAV FTE	200.3	205.8	236.5	250.4	298.8	269.8	276.8	262.9	274.0
First Term at Valencia	25.2%	25.2%	24.9%	24.8%	25.0%	21.4%	22.3%	21.5%	22.8%
First Year at Valencia FTE	369.9	376.9	437.2	460.4	561.2	555.4	546.1	531.3	522.0
First Year at Valencia	46.6%	46.1%	46.1%	45.6%	47.0%	44.1%	44.0%	43.5%	43.4%
First 15 College Credit Hours at Valencia FTE	457.2	466.5	532.3	567.3	666.4	657.6	635.7	622.6	605.8
New Student	57.5%	57.1%	56.1%	56.1%	55.9%	52.2%	51.2%	51.0%	50.4%

Note: New Student = A student who has earned fewer than 15 college credits at Valencia College.

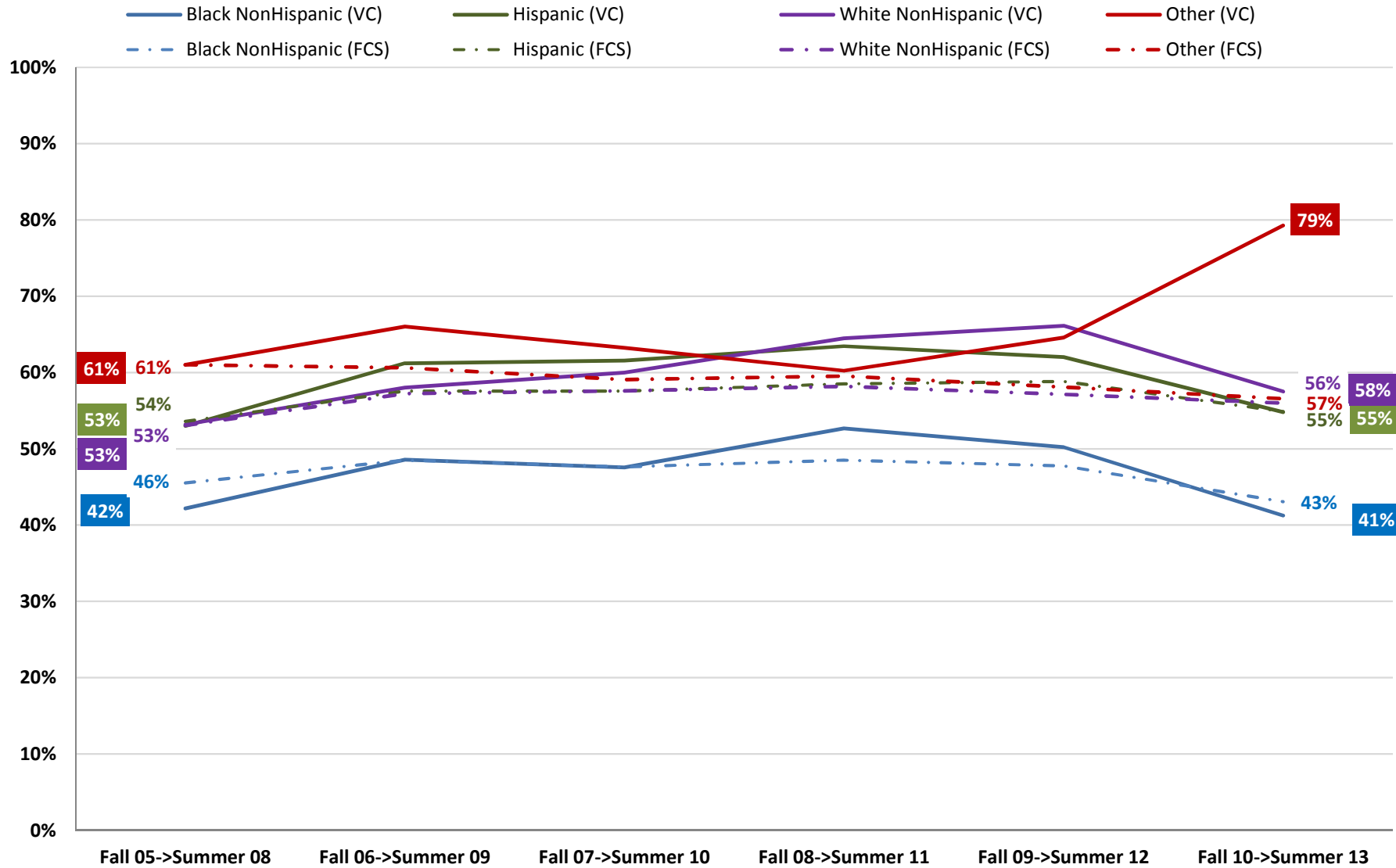
Accountability Outcome Measure 4 Part 1 - Mathematics

College Preparatory Three Year Success Rate Report by Ethnicity

Cohort: Fall* term first time in college degree seeking students who took an entry level assessment

*For this report , Fall first time in college degree seeking students includes summer first time in college students who returned in the Fall term.

Solid lines and highlighted data labels indicate Valencia College data, while dashed lines and unhighlighted data labels indicate Florida College System data.



Accountability Outcome Measure 4 Part 1 - **Mathematics**

College Preparatory Three Year Success Rate Report by Ethnicity

Cohort: Fall* term first time in college degree seeking students who took an entry level assessment

*For this report , Fall first time in college degree seeking students includes summer first time in college students who returned in the Fall term.

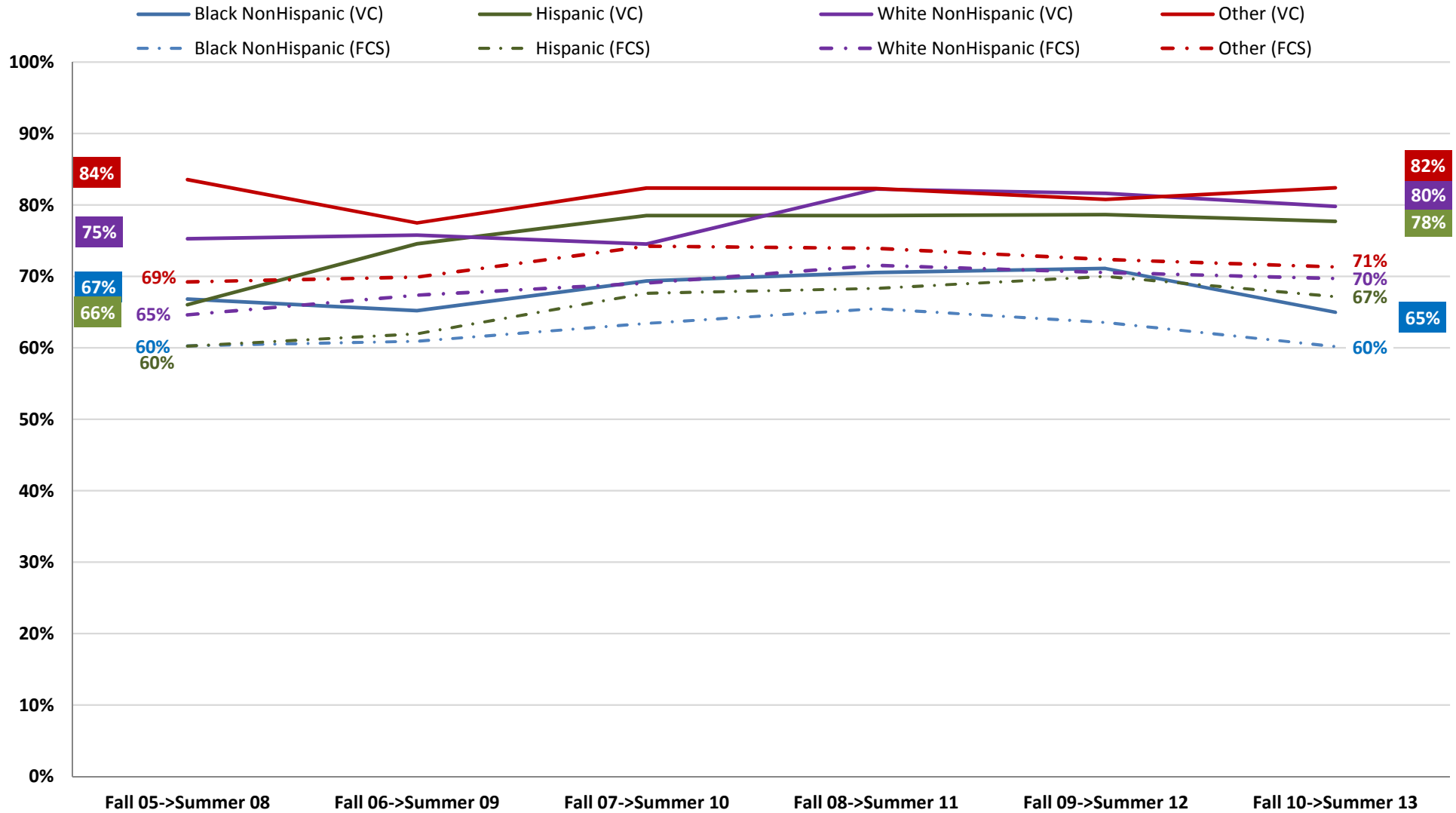
Valencia College (VC)						
	Fall 05->Summer 08	Fall 06->Summer 09	Fall 07->Summer 10	Fall 08->Summer 11	Fall 09->Summer 12	Fall 10->Summer 13
Number Passing Highest Level of Developmental Mathematics						
Total (VC)	1003	1241	1522	1657	1895	1610
Black NonHispanic (VC)	178	240	264	325	346	306
Hispanic (VC)	309	399	519	599	699	642
White NonHispanic (VC)	408	431	529	521	611	509
Other (VC)	108	171	210	212	239	153
Success Rates						
Total (VC)	51%	58%	58%	61%	61%	53%
Black NonHispanic (VC)	42%	49%	48%	53%	50%	41%
Hispanic (VC)	53%	61%	62%	63%	62%	55%
White NonHispanic (VC)	53%	58%	60%	64%	66%	58%
Other (VC)	61%	66%	63%	60%	65%	79%

Florida College System (FCS)						
	Fall 05->Summer 08	Fall 06->Summer 09	Fall 07->Summer 10	Fall 08->Summer 11	Fall 09->Summer 12	Fall 10->Summer 13
Number Passing Highest Level of Developmental Mathematics						
Total (FCS)	12131	14002	15186	16278	17433	16694
Black NonHispanic (FCS)	2438	2823	3071	3560	4060	3746
Hispanic (FCS)	3038	3550	3927	4382	4696	4759
White NonHispanic (FCS)	5939	6757	7214	7325	7111	6668
Other (FCS)	716	872	974	1011	1566	1521
Success Rates						
Total (FCS)	52%	55%	55%	56%	55%	52%
Black NonHispanic (FCS)	46%	49%	48%	49%	48%	43%
Hispanic (FCS)	54%	58%	58%	59%	59%	55%
White NonHispanic (FCS)	53%	57%	58%	58%	57%	56%
Other (FCS)	61%	61%	59%	60%	58%	57%

Accountability Outcome Measure 4 Part 1 - Writing
College Preparatory Three Year Success Rate Report by Ethnicity
Cohort: Fall* term first time in college degree seeking students who took an entry level assessment

*For this report, Fall first time in college degree seeking students includes summer first time in college students who returned in the Fall term.

Solid lines and highlighted data labels indicate Valencia College data, while dashed lines and unhighlighted data labels indicate Florida College System data.



Accountability Outcome Measure 4 Part 1 - Writing

College Preparatory Three Year Success Rate Report by Ethnicity

Cohort: Fall* term first time in college degree seeking students who took an entry level assessment

*For this report, Fall first time in college degree seeking students includes summer first time in college students who returned in the Fall term.

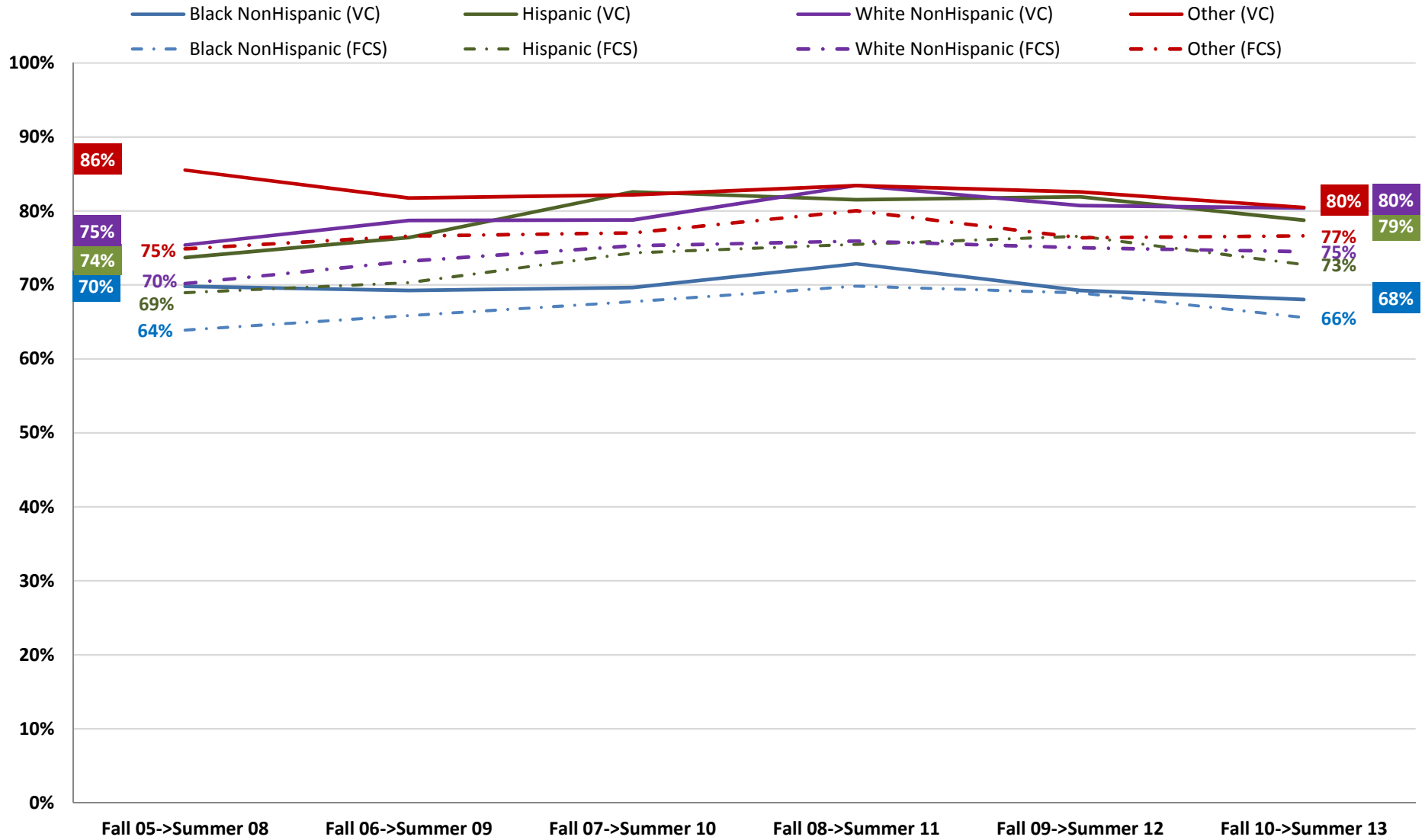
Valencia College (VC)						
	Fall 05->Summer 08	Fall 06->Summer 09	Fall 07->Summer 10	Fall 08->Summer 11	Fall 09->Summer 12	Fall 10->Summer 13
Number Passing Highest Level of Developmental Writing						
Total (VC)	558	649	973	1017	1179	1161
Black NonHispanic (VC)	139	165	224	254	288	276
Hispanic (VC)	140	176	274	300	420	464
White NonHispanic (VC)	213	222	316	319	324	304
Other (VC)	66	86	159	144	147	117
Success Rates						
Total (VC)	71%	73%	75%	78%	78%	75%
Black NonHispanic (VC)	67%	65%	69%	71%	71%	65%
Hispanic (VC)	66%	75%	79%	79%	79%	78%
White NonHispanic (VC)	75%	76%	75%	82%	82%	80%
Other (VC)	84%	77%	82%	82%	81%	82%

Florida College System (FCS)						
	Fall 05->Summer 08	Fall 06->Summer 09	Fall 07->Summer 10	Fall 08->Summer 11	Fall 09->Summer 12	Fall 10->Summer 13
Number Passing Highest Level of Developmental Writing						
Total (FCS)	7226	7580	9917	10561	11756	11583
Black NonHispanic (FCS)	2097	2151	2818	3227	3741	3700
Hispanic (FCS)	1739	1857	2538	2654	2975	3064
White NonHispanic (FCS)	2895	3010	3812	3903	3967	3655
Other (FCS)	495	562	749	777	1073	1164
Success Rates						
Total (FCS)	63%	64%	67%	69%	68%	66%
Black NonHispanic (FCS)	60%	61%	63%	65%	64%	60%
Hispanic (FCS)	60%	62%	68%	68%	70%	67%
White NonHispanic (FCS)	65%	67%	69%	72%	71%	70%
Other (FCS)	69%	70%	74%	74%	72%	71%

Accountability Outcome Measure 4 Part 1 - Reading
College Preparatory Three Year Success Rate Report by Ethnicity
Cohort: Fall* term first time in college degree seeking students who took an entry level assessment

*For this report, Fall first time in college degree seeking students includes summer first time in college students who returned in the Fall term.

Solid lines and highlighted data labels indicate Valencia College data, while dashed lines and unhighlighted data labels indicate Florida College System data.



Accountability Outcome Measure 4 Part 1 - Reading

College Preparatory Three Year Success Rate Report by Ethnicity

Cohort: Fall* term first time in college degree seeking students who took an entry level assessment

*For this report fall first time in college degree seeking students includes summer first time in college students who returned in the fall term

Valencia College (VC)						
	Fall 05->Summer 08	Fall 06->Summer 09	Fall 07->Summer 10	Fall 08->Summer 11	Fall 09->Summer 12	Fall 10->Summer 13
Number Passing Highest Level of Developmental Reading						
Total (VC)	1119	1309	1497	1581	1702	1584
Black NonHispanic (VC)	280	304	344	376	410	398
Hispanic (VC)	283	353	432	494	598	615
White NonHispanic (VC)	420	455	486	464	452	406
Other (VC)	136	197	235	247	242	165
Success Rates						
Total (VC)	75%	76%	78%	80%	78%	76%
Black NonHispanic (VC)	70%	69%	70%	73%	69%	68%
Hispanic (VC)	74%	76%	83%	82%	82%	79%
White NonHispanic (VC)	75%	79%	79%	83%	81%	80%
Other (VC)	86%	82%	82%	83%	83%	80%

Florida College System (FCS)						
	Fall 05->Summer 08	Fall 06->Summer 09	Fall 07->Summer 10	Fall 08->Summer 11	Fall 09->Summer 12	Fall 10->Summer 13
Number Passing Highest Level of Developmental Reading						
Total (FCS)	11842	12409	13598	14086	14850	14233
Black NonHispanic (FCS)	3221	3268	3687	4091	4641	4489
Hispanic (FCS)	3192	3344	3768	3979	4126	4041
White NonHispanic (FCS)	4618	4851	5133	5018	4751	4319
Other (FCS)	811	946	1010	998	1332	1384
Success Rates						
Total (FCS)	68%	71%	73%	74%	74%	71%
Black NonHispanic (FCS)	64%	66%	68%	70%	69%	66%
Hispanic (FCS)	69%	70%	74%	75%	77%	73%
White NonHispanic (FCS)	70%	73%	75%	76%	75%	75%
Other (FCS)	75%	77%	77%	80%	76%	77%